

## Recombinant Human CARD9 Protein, GST-Tagged

**Cat. No.** CARD9-0399H    **Lot. No.** (See product label)

### SPECIFICATION

<b>Product Overview</b>	Human CARD9 full-length ORF (AAH08877.1, 1 a.a. - 492 a.a.) recombinant protein with GST-tag at N-terminal.
<b>Species</b>	Human
<b>Source</b>	Wheat Germ
<b>Description</b>	The protein encoded by this gene is a member of the CARD protein family, which is defined by the presence of a characteristic caspase-associated recruitment domain (CARD). CARD is a protein interaction domain known to participate in activation or suppression of CARD containing members of the caspase family, and thus plays an important regulatory role in cell apoptosis. This protein was identified by its selective association with the CARD domain of BCL10, a positive regulator of apoptosis and NF-kappaB activation, and is thought to function as a molecular scaffold for the assembly of a BCL10 signaling complex that activates NF-kappaB. Several alternatively spliced transcript variants have been observed, but their full-length nature is not clearly defined. [provided by RefSeq, Jul 2008]
<b>Molecular Mass</b>	83.1 kDa
<b>AA Sequence</b>	MSDYENDDECWSVLEGFRVTLTSVIDPSRITPYLRQCKVLNPDDEEQVLSDPNLVIR KRKVGVLLDILQRTGHKGYVAFLESLELYYPQLYKKVTGKEPARVFSMIIDASGESGL TQLLMTEVMKLQKKVQDLTALLSSKDDFIKELRVKDSLLRKHQERVQRLKEECEAGS RELKRCKEENYDLAMRLAHQSEEKGAALMRNRDLQLEIDQLKHSLMKAEDDCKVER

 Tel: 1-631-559-9269    1-516-512-3133

 Email: [info@creative-biomart.com](mailto:info@creative-biomart.com)     Fax: 1-631-938-8127

 45-1 Ramsey Road, Shirley, NY 11967, USA

KHTLKL RHAMEQRPSQELLWELQQEKALLQARVQELEASVQEGKDRSSPYIQVLE  
 EDWRQALRDHQEQANTIFSLRKDLRQGEARRLRCMEEKEMFELQCLALRKDSKMY  
 KDRIEAILLQMEEVAIERDQAIATREELHAQHARGLQEKDALRKQVRELGEKADELQL  
 QVFQCEAQLLAVEGRLRRQQLETLVLSSDLEDGSPRRSQELSLPQDLEDTQLSDKG  
 CLAGGGSPKQPFAALHQEQVLRNPHDAGPAGLPGIGAVC

**Applications**  
 Enzyme-linked Immunoabsorbent Assay  
 Western Blot (Recombinant protein)  
 Antibody Production  
 Protein Array

**Storage** Store at -80 centigrade. Aliquot to avoid repeated freezing and thawing.

**Storage Buffer** 50 mM Tris-HCl, 10 mM reduced Glutathione, pH=8.0 in the elution buffer.

## GENE INFORMATION

**Gene Name** [CARD9 caspase recruitment domain family, member 9 \[ Homo sapiens \]](#)

**Official Symbol** [CARD9](#)

**Synonyms** CARD9; caspase recruitment domain family, member 9; caspase recruitment domain-containing protein 9; CANDF2; hCARD9;

**Gene ID** [64170](#)

**mRNA Refseq** [NM\\_052813](#)

**Protein Refseq** [NP\\_434700](#)

**MIM** [607212](#)

 Tel: 1-631-559-9269 1-516-512-3133

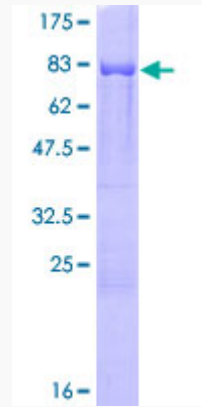
 Email: [info@creative-biomart.com](mailto:info@creative-biomart.com)  Fax: 1-631-938-8127

 45-1 Ramsey Road, Shirley, NY 11967, USA

UniProt ID

Q9H257

Quality Control  
Testing



12.5% SDS-PAGE Stained with Coomassie Blue.

 Tel: 1-631-559-9269 1-516-512-3133

 Email: [info@creative-biomart.com](mailto:info@creative-biomart.com)  Fax: 1-631-938-8127

 45-1 Ramsey Road, Shirley, NY 11967, USA