

Recombinant Human CARD9 Protein, Myc/DDK-tagged, C13 and N15-labeled

Cat. No. CARD9-2668H **Lot. No.** (See product label)

SPECIFICATION

Product Overview	CARD9 MS Standard C13 and N15-labeled recombinant protein (NP_434700) with a C-terminal MYC/DDK tag, was expressed in HEK293 cells.
Species	Human
Source	HEK293
Description	The protein encoded by this gene is a member of the CARD protein family, which is defined by the presence of a characteristic caspase-associated recruitment domain (CARD). CARD is a protein interaction domain known to participate in activation or suppression of CARD containing members of the caspase family, and thus plays an important regulatory role in cell apoptosis. This protein was identified by its selective association with the CARD domain of BCL10, a positive regulator of apoptosis and NF-kappaB activation, and is thought to function as a molecular scaffold for the assembly of a BCL10 signaling complex that activates NF-kappaB. Several alternatively spliced transcript variants have been observed, but their full-length nature is not clearly defined.
Molecular Mass	62.1 kDa
AA Sequence	MSDYENDDECWNVLEGFRVTLTSVIDPSRITPYLRQCKVLNPDDEEQVLSDPNLVIR KRKVGVLLEDILQRTGHKGYVAFLESLELYYPQLYKKVTGKEPARVFSMIIDASGESGL TQLLMTEVMKLQKKVQDLTALLSSKDDFIKELRVKDSLLRKHQERVQRLKEECEAGS

 Tel: 1-631-559-9269 1-516-512-3133

 Email: info@creative-biomart.com  Fax: 1-631-938-8127

 45-1 Ramsey Road, Shirley, NY 11967, USA

RELKRCKEENYDLAMRLAHQSEEKGAALMRNRDLQLEIDQLKHSLMKAEDDCKVER
 KHTLKL RHAMEQRPSQELLWELQQEKALLQARVQELEASVQEGKLD RSPYIQVLE
 EDWRQALRDHQEQANTIFSLRKDLRQGEARRLR CMEEKEMFELQCLALRKDSKMY
 KDRIEAILLQMEEVAIERDQAIATREELHAQHARGLQEKDALRKQVRELGEKADELQL
 QVFQCEAQLLAVEGRLRRQQLETLVLSSDLEDGSPRRSQELSLPQDLEDTQLSDKG
 CLAGGGSPKQPFAALHQEQVLRNPHDAGLSSGEPPEKERRRLKESFENYRRKRAL
 RKMQKGWRQGEEDRENTTGSDNTDTEGSTRRLEQKLISEEDLAANDILDYKDDDD
 KV

Purity	> 80% as determined by SDS-PAGE and Coomassie blue staining
Stability	Stable for 3 months from receipt of products under proper storage and handling conditions.
Storage	Store at -80 centigrade. Avoid repeated freeze-thaw cycles.
Concentration	50 µg/mL as determined by BCA
Storage Buffer	100 mM glycine, 25 mM Tris-HCl, pH 7.3.

GENE INFORMATION

Gene Name	CARD9 caspase recruitment domain family member 9 [Homo sapiens (human)]
Official Symbol	CARD9
Synonyms	CARD9; caspase recruitment domain family, member 9; caspase recruitment domain-containing protein 9; CANDF2; hCARD9;
Gene ID	64170

 Tel: 1-631-559-9269 1-516-512-3133

 Email: info@creative-biomart.com  Fax: 1-631-938-8127

 45-1 Ramsey Road, Shirley, NY 11967, USA

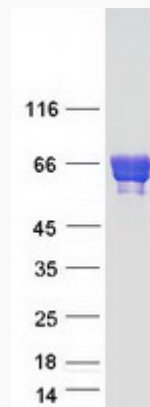
mRNA Refseq [NM_052813](#)

Protein Refseq [NP_434700](#)

MIM [607212](#)

UniProt ID [Q9H257](#)

SDS-PAGE



 Tel: 1-631-559-9269 1-516-512-3133

 Email: info@creative-biomart.com  Fax: 1-631-938-8127

 45-1 Ramsey Road, Shirley, NY 11967, USA