

# Recombinant Full Length Human CARD9 Protein, C-Flag-tagged

**Cat. No.** CARD9-276HFL    **Lot. No.** (See product label)

## SPECIFICATION

<b>Product Overview</b>	Recombinant Full Length Human CARD9 Protein, fused to Flag-tag at C-terminus, was expressed in Mammalian cells.
<b>Species</b>	Human
<b>Source</b>	Mammalian Cells
<b>Description</b>	The protein encoded by this gene is a member of the CARD protein family, which is defined by the presence of a characteristic caspase-associated recruitment domain (CARD). CARD is a protein interaction domain known to participate in activation or suppression of CARD containing members of the caspase family, and thus plays an important regulatory role in cell apoptosis. This protein was identified by its selective association with the CARD domain of BCL10, a positive regulator of apoptosis and NF-kappaB activation, and is thought to function as a molecular scaffold for the assembly of a BCL10 signaling complex that activates NF-kappaB. Several alternatively spliced transcript variants have been observed, but their full-length nature is not clearly defined.
<b>Form</b>	25 mM Tris HCl, pH 7.3, 100 mM glycine, 10% glycerol.
<b>Molecular Mass</b>	62.1 kDa
<b>AA Sequence</b>	MSDYENDDECWNVLEGFRVTLTVIDPSRITPYLRQCKVLNPDDEEQVLSDPNLVIR KRKVGVLLDILQR TGHKGYVAFLESLELYYPQLYKKVVTGKEPARVFSMIIDASGESG

 Tel: 1-631-559-9269    1-516-512-3133

 Email: [info@creative-biomart.com](mailto:info@creative-biomart.com)     Fax: 1-631-938-8127

 45-1 Ramsey Road, Shirley, NY 11967, USA

LTQLLMTEVMKLQKKVQDLTALLSSK DDFIKELRVKDSLLRKHQERVQRLKEECEAG  
 SRELKRCKEENYDLAMRLAHQSEEKGAALMRNRDLQLEI DQLKHSLMKAEDDCKV  
 ERKHTLKL RHAMEQRPSQELLWELQQEKALLQARVQELEASVQEGKDRSSPYI Q  
 VLEEDWRQALRDHQEQANTIFSLRKDLRQGEARRLRCMEEKEMFELQCLALRKDS  
 KMYKDRIEAILLQM EEVAIERDQAIATREELHAQHARGLQEKDALRKQVRELGEKAD  
 ELQLQVFQCEAQLLAVEGRLRRQQLT LVLSSDLEDGSPRRSQELSLPQDLEDTQL  
 SDKGCLAGGGSPKQPFAALHQEQVLRNPHDAGLSSGEPPEK  
 ERRRLKESFENYRRKRALRKMQKGWRQGEEDRENTTGSNDTDEGSTRRLEQKLI  
 SEEDLAANDILDYKDDDDKV

<b>Purity</b>	> 80% as determined by SDS-PAGE and Coomassie blue staining.
<b>Stability</b>	Stable for 12 months from the date of receipt of the product under proper storage and handling conditions. Avoid repeated freeze-thaw cycles.
<b>Storage</b>	Store at -80 centigrade.
<b>Concentration</b>	>50 ug/mL as determined by microplate BCA method.
<b>Preparation</b>	Recombinant protein was captured through anti-DDK affinity column followed by conventional chromatography steps.
<b>Protein Families</b>	Druggable Genome
<b>Protein Pathways</b>	NOD-like receptor signaling pathway
<b>Full Length</b>	Full L.

## GENE INFORMATION

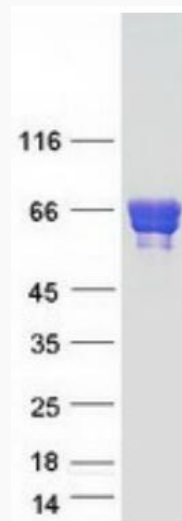
**Gene Name** [CARD9 caspase recruitment domain family member 9 \[ Homo sapiens \(human\) \]](#)

 Tel: 1-631-559-9269 1-516-512-3133

 Email: [info@creative-biomart.com](mailto:info@creative-biomart.com)  Fax: 1-631-938-8127

 45-1 Ramsey Road, Shirley, NY 11967, USA

<b>Official Symbol</b>	CARD9
<b>Synonyms</b>	CANDF2; IMD103; hCARD9
<b>Gene ID</b>	64170
<b>mRNA Refseq</b>	NM_052813.5
<b>Protein Refseq</b>	NP_434700.2
<b>MIM</b>	607212
<b>UniProt ID</b>	Q9H257



Coomassie blue staining of purified CARD9 protein.

 Tel: 1-631-559-9269 1-516-512-3133

 Email: [info@creative-biomart.com](mailto:info@creative-biomart.com)  Fax: 1-631-938-8127

 45-1 Ramsey Road, Shirley, NY 11967, USA