

# Recombinant Human CARD9 Protein, Myc/DDK-tagged, C13 and N15-labeled

**Cat. No.** CARD9-3639H    **Lot. No.** (See product label)

## SPECIFICATION

<b>Product Overview</b>	CARD9 MS Standard C13 and N15-labeled recombinant protein (NP_434701) with a C-terminal MYC/DDK tag, was expressed in HEK293 cells.
<b>Species</b>	Human
<b>Source</b>	HEK293
<b>Description</b>	The protein encoded by this gene is a member of the CARD protein family, which is defined by the presence of a characteristic caspase-associated recruitment domain (CARD). CARD is a protein interaction domain known to participate in activation or suppression of CARD containing members of the caspase family, and thus plays an important regulatory role in cell apoptosis. This protein was identified by its selective association with the CARD domain of BCL10, a positive regulator of apoptosis and NF-kappaB activation, and is thought to function as a molecular scaffold for the assembly of a BCL10 signaling complex that activates NF-kappaB. Several alternatively spliced transcript variants have been observed, but their full-length nature is not clearly defined.
<b>Molecular Mass</b>	56.5 kDa
<b>AA Sequence</b>	MSDYENDDECWSVLEGFRVTLTSVIDPSRITPYLRQCKVLNPDDEEQVLSDPNLVIR KRKVGVLDDILQRTGHKGYVAFLESLELYYPQLYKKVTGKEPARVFSMIIDASGESGL TQLLMTEVMKLQKKVQDLTALLSSKDDFIKELRVKDSLLRKHQERVQRLKEECEAGS

 Tel: 1-631-559-9269    1-516-512-3133

 Email: [info@creative-biomart.com](mailto:info@creative-biomart.com)     Fax: 1-631-938-8127

 45-1 Ramsey Road, Shirley, NY 11967, USA

RELKRCKEENYDLAMRLAHQSEEKGAALMRNRDLQLEIDQLKHSLMKAEDDCKVER  
 KHTLKL RHAMEQRPSQELLWELQQEKALLQARVQELEASVQEGKDRSSPYIQVLE  
 EDWRQALRDHQEQANTIFSLRKDLRQGEARRLRCMEEKEMFELQCLALRKDSKMY  
 KDRIEAILLQMEEVAIERDQAIATREELHAQHARGLQEKDALRKQVRELGEKADELQL  
 QVFQCEAQLLAVEGRLRRQQLETLVLSSDLEDGSPRRSQELSLPQDLEDTQLSDKG  
 CLAGGGSPKQPFAALHQEQVLRNPHDAGPAGLPGIGAVCTRRLLEQKLISEEDLAAN  
 DILDYKDDDDKV

**Purity** > 80% as determined by SDS-PAGE and Coomassie blue staining

**Stability** Stable for 3 months from receipt of products under proper storage and handling conditions.

**Storage** Store at -80 centigrade. Avoid repeated freeze-thaw cycles.

**Concentration** 50 µg/mL as determined by BCA

**Storage Buffer** 100 mM glycine, 25 mM Tris-HCl, pH 7.3.

## GENE INFORMATION

**Gene Name** [CARD9 caspase recruitment domain family member 9 \[ Homo sapiens \(human\) \]](#)

**Official Symbol** [CARD9](#)

**Synonyms** CARD9; caspase recruitment domain family, member 9; caspase recruitment domain-containing protein 9; CANDF2; hCARD9;

**Gene ID** [64170](#)

**mRNA Refseq** [NM\\_052814](#)

 Tel: 1-631-559-9269 1-516-512-3133

 Email: [info@creative-biomart.com](mailto:info@creative-biomart.com)  Fax: 1-631-938-8127

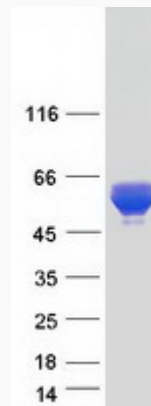
 45-1 Ramsey Road, Shirley, NY 11967, USA

**Protein Refseq** NP\_434701

**MIM** 607212

**UniProt ID** Q9H257

**SDS-PAGE**



 Tel: 1-631-559-9269 1-516-512-3133

 Email: [info@creative-biomart.com](mailto:info@creative-biomart.com)  Fax: 1-631-938-8127

 45-1 Ramsey Road, Shirley, NY 11967, USA