

Recombinant Human CARHSP1 Protein, GST-Tagged

Cat. No. CARHSP1-0401H Lot. No. (See product label)

SPECIFICATION

Product Overview	Human CARHSP1 full-length ORF (NP_001035941.1, 1 a.a. - 147 a.a.) recombinant protein with GST-tag at N-terminal.
Species	Human
Source	Wheat Germ
Description	CARHSP1 (Calcium Regulated Heat Stable Protein 1) is a Protein Coding gene. GO annotations related to this gene include nucleic acid binding and mRNA 3-UTR binding. An important paralog of this gene is CSDC2.
Molecular Mass	42.3 kDa
AA Sequence	MSSEPPPPPQPPTHQASVGLLDTPRSRERSPSPLRGNVVPSPLPTRRTRTF SATVR ASQGPVYKGVCKCFCRSKGHGFITPADGGPDIFLHISDVEGEYVPVEGDEV TYKMC SIPPKNEKLQAVEVVITHLAPGTKHETWSGHVISS
Applications	Enzyme-linked Immunoabsorbent Assay Western Blot (Recombinant protein) Antibody Production Protein Array
Storage	Store at -80 centigrade. Aliquot to avoid repeated freezing and thawing.
Storage Buffer	50 mM Tris-HCl, 10 mM reduced Glutathione, pH=8.0 in the elution buffer.

 Tel: 1-631-559-9269 1-516-512-3133

 Email: info@creative-biomart.com  Fax: 1-631-938-8127

 45-1 Ramsey Road, Shirley, NY 11967, USA

GENE INFORMATION

Gene Name CARHSP1 calcium regulated heat stable protein 1, 24kDa [Homo sapiens]

Official Symbol CARHSP1

Synonyms CARHSP1; calcium regulated heat stable protein 1, 24kDa; calcium regulated heat stable protein 1 (24kD); calcium-regulated heat stable protein 1; CRHSP 24; CSDC1; calcium-regulated heat-stable protein (24kD); calcium-regulated heat-stable protein of 24 kDa; CRHSP-24; MGC111446;

Gene ID 23589

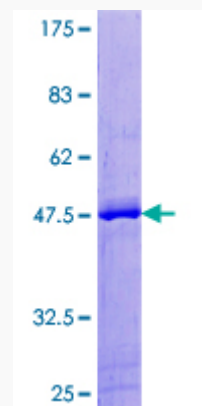
mRNA Refseq NM_001042476

Protein Refseq NP_001035941

MIM 616885

UniProt ID Q9Y2V2

Quality Control Testing



Tel: 1-631-559-9269 1-516-512-3133

Email: info@creative-biomart.com Fax: 1-631-938-8127

45-1 Ramsey Road, Shirley, NY 11967, USA



12.5% SDS-PAGE Stained with Coomassie Blue.

 Tel: 1-631-559-9269 1-516-512-3133

 Email: info@creative-biomart.com  Fax: 1-631-938-8127

 45-1 Ramsey Road, Shirley, NY 11967, USA