

## Recombinant Human CARS Protein, GST-Tagged

Cat. No. CARS-0403H Lot. No. (See product label)

### SPECIFICATION

<b>Product Overview</b>	Human CARS full-length ORF (AAH02880, 1 a.a. - 748 a.a.) recombinant protein with GST-tag at N-terminal.
<b>Species</b>	Human
<b>Source</b>	Wheat Germ
<b>Description</b>	This gene encodes a class 1 aminoacyl-tRNA synthetase, cysteinyl-tRNA synthetase. Each of the twenty aminoacyl-tRNA synthetases catalyzes the aminoacylation of a specific tRNA or tRNA isoaccepting family with the cognate amino acid. This gene is one of several located near the imprinted gene domain on chromosome 11p15.5, an important tumor-suppressor gene region. Alterations in this region have been associated with Beckwith-Wiedemann syndrome, Wilms tumor, rhabdomyosarcoma, adrenocortical carcinoma, and lung, ovarian and breast cancers. Alternative splicing of this gene results in multiple transcript variants. [provided by RefSeq, Aug 2010]
<b>Molecular Mass</b>	107.91 kDa
<b>AA Sequence</b>	MADSSGQQGKGRRVQPQWSPAGTQPCRLHLYNSLTRNKEVFIPQDGKKVTWYC CGPTVYDASHMGHARSYISFDILRRVLKDYFKFDVFCMNITDIDDKIIKRARQNHLE QYREKRPEAAQLLEDVQAALKPFSVKLNETTDPDKKQMLERIQHAVQLATEPLEKAV QSRLTGEEVNSCVELLEEAKDLLSDWLDSTLGCDVTDNSIFSKLPKFWEGDFHRD MEALNVLPPDLTRVSEYVPEIVNFVQKIVDNGYGYVSNGSVYFDTAKFASSEKHSY GKLVPEAVGDQKALQEGEGDLSISADRLSEKRSPNDFALWKASKPGEPSWPCPWG

 Tel: 1-631-559-9269 1-516-512-3133

 Email: [info@creative-biomart.com](mailto:info@creative-biomart.com)  Fax: 1-631-938-8127

 45-1 Ramsey Road, Shirley, NY 11967, USA

KGRPGWHIECSAMAGTLLGASMDIHGGGFDLRFPHHDNELAQSEAYFENDCWVRY  
 FLHTGHLLTIAGCKMSKSLKNFITIKDALKKHSARQLRLAFLMHSWKDTLDYSSNTMES  
 ALQYEKFLNEFFLNVKDILRAPVDITGQFEKWGEEEEAELNKNFYDKKTAIHKALCDNV  
 DTRTVMEEMRALVSQCNLYMAARKAVRKRPNQALLENIALYLTHMLKIFGAVEEDSS  
 LGFPVGGPGTSLSLEATVMPYLQVLSEFREGVRKIAREQKVPEILQLSDALRDNILPE  
 LGVRFEDHEGLPTVVKLVDRNTLLKEREKRRVEEEKRKKKEEAARRKQEQAACL  
 AKMKIPPSEMFLSETDKYSKFDENGLPTHDMEGKELSKGQAKKLLKLFEAQEKLYKE  
 YLQMAQNGSFQ

**Applications**

Enzyme-linked Immunoabsorbent Assay  
 Western Blot (Recombinant protein)  
 Antibody Production  
 Protein Array

**Storage**

Store at -80 centigrade. Aliquot to avoid repeated freezing and thawing.

**Storage Buffer**

50 mM Tris-HCl, 10 mM reduced Glutathione, pH=8.0 in the elution buffer.

## GENE INFORMATION

**Gene Name**

CARS cysteinyl-tRNA synthetase [ Homo sapiens ]

**Official Symbol**

CARS

**Synonyms**

CARS; cysteinyl-tRNA synthetase; cysteine--tRNA ligase, cytoplasmic; CARS1;  
 cysteine tRNA ligase 1; cytoplasmic; cysteine transase; cysteine tRNA ligase 1,  
 cytoplasmic; CYSRS; MGC:11246;

**Gene ID**


833

**mRNA Refseq**

NM\_001014437

 Tel: 1-631-559-9269 1-516-512-3133

 Email: [info@creative-biomart.com](mailto:info@creative-biomart.com)  Fax: 1-631-938-8127

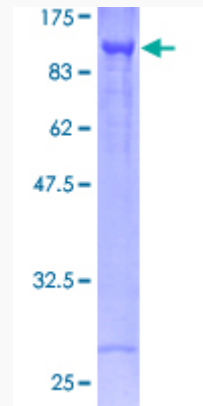
 45-1 Ramsey Road, Shirley, NY 11967, USA

**Protein Refseq** NP\_001014437

**MIM** 123859

**UniProt ID** P49589

**Quality Control  
Testing**



12.5% SDS-PAGE Stained with Coomassie Blue.

 Tel: 1-631-559-9269 1-516-512-3133

 Email: [info@creative-biomart.com](mailto:info@creative-biomart.com)  Fax: 1-631-938-8127

 45-1 Ramsey Road, Shirley, NY 11967, USA