

Recombinant Human CARTPT Protein, GST-Tagged

Cat. No. CARTPT-0406H Lot. No. (See product label)

SPECIFICATION

Product Overview	Human CART full-length ORF (AAH29882, 1 a.a. - 116 a.a.) recombinant protein with GST-tag at N-terminal.
Species	Human
Source	Wheat Germ
Description	This gene encodes a preproprotein that is proteolytically processed to generate multiple biologically active peptides. These peptides play a role in appetite, energy balance, maintenance of body weight, reward and addiction, and the stress response. Expression of a similar gene transcript in rodents is upregulated following administration of cocaine and amphetamine. Mutations in this gene are associated with susceptibility to obesity in humans. [provided by RefSeq, Feb 2016]
Molecular Mass	38.5 kDa
AA Sequence	MESSRVRLPLLLGAALLLMLPLLGTRAQEDAELQPRALDIYSVDDASHEKELIEALQ EVLKKLKSKRVPIYEKQYQVPMCDAGEQCAVRKRGARIGKLCDCPRGTSCNSFLK CL
Applications	Enzyme-linked Immunoabsorbent Assay Western Blot (Recombinant protein) Antibody Production Protein Array

 Tel: 1-631-559-9269 1-516-512-3133

 Email: info@creative-biomart.com  Fax: 1-631-938-8127

 45-1 Ramsey Road, Shirley, NY 11967, USA

Storage Store at -80 centigrade. Aliquot to avoid repeated freezing and thawing.

Storage Buffer 50 mM Tris-HCl, 10 mM reduced Glutathione, pH=8.0 in the elution buffer.

GENE INFORMATION

Gene Name [CARTPT](#) [CART prepropeptide \[Homo sapiens \]](#)

Official Symbol [CARTPT](#)

Synonyms [CARTPT](#); [CART prepropeptide](#); [cocaine- and amphetamine-regulated transcript protein](#); [CART](#); [cocaine and amphetamine regulated transcript](#);

Gene ID [9607](#)

mRNA Refseq [NM_004291](#)

Protein Refseq [NP_004282](#)

MIM [602606](#)

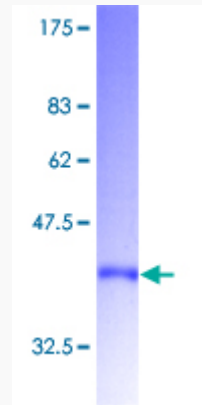
UniProt ID [Q16568](#)

 Tel: 1-631-559-9269 1-516-512-3133

 Email: info@creative-biomart.com  Fax: 1-631-938-8127

 45-1 Ramsey Road, Shirley, NY 11967, USA

**Quality Control
Testing**



12.5% SDS-PAGE Stained with Coomassie Blue.

 Tel: 1-631-559-9269 1-516-512-3133

 Email: info@creative-biomart.com  Fax: 1-631-938-8127

 45-1 Ramsey Road, Shirley, NY 11967, USA