

Recombinant Human CARTPT Protein (Gln28-Leu116), C-His tagged

Cat. No. CARTPT-0850H Lot. No. (See product label)

SPECIFICATION

Product Overview	Recombinant human CARTPT (Gln28-Leu116) fused with the C-terminal His tag was expressed in Mammalian cells.
Species	Human
Source	Mammalian Cells
ProteinLength	Gln28-Leu116
Form	Lyophilized powder/frozen liquid
Molecular Mass	9.79 kDa
Purity	>90% as determined by SDS-PAGE.
Notes	For research use only.
Storage	Use a manual defrost freezer and avoid repeated freeze thaw cycles. Store at 2 to 8 centigrade for one week. Store at -20 to -80 centigrade for twelve months from the date of receipt.
Storage Buffer	Supplied as solution form in PBS or lyophilized from PBS.
Reconstitution	Reconstitute in sterile water for a stock solution.

 Tel: 1-631-559-9269 1-516-512-3133

 Email: info@creative-biomart.com  Fax: 1-631-938-8127

 45-1 Ramsey Road, Shirley, NY 11967, USA

Shipping

They are shipped out with dry ice/blue ice unless customers require otherwise.

GENE INFORMATION**Gene Name**

CARTPT CART prepropeptide [Homo sapiens (human)]

Official Symbol

CARTPT

Synonyms

CARTPT; CART prepropeptide; cocaine- and amphetamine-regulated transcript protein; CART; cocaine and amphetamine regulated transcript;

Gene ID

9607

mRNA Refseq

NM_004291

Protein Refseq

NP_004282

MIM

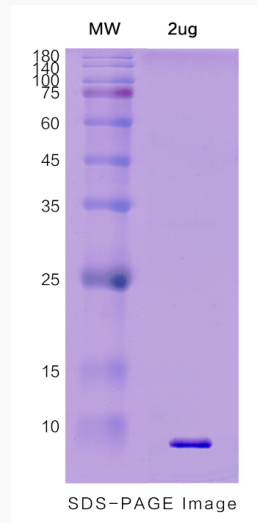
602606

UniProt ID

Q16568

 Tel: 1-631-559-9269 1-516-512-3133 Email: info@creative-biomart.com  Fax: 1-631-938-8127 45-1 Ramsey Road, Shirley, NY 11967, USA

SDS-PAGE



 Tel: 1-631-559-9269 1-516-512-3133

 Email: info@creative-biomart.com  Fax: 1-631-938-8127

 45-1 Ramsey Road, Shirley, NY 11967, USA