

# Recombinant Human Caspase 1, Apoptosis-Related Cysteine Peptidase (interleukin 1, beta, convertase), His-tagged

Cat. No. CASP1-1639H Lot. No. (See product label)

## SPECIFICATION

<b>Product Overview</b>	Recombinant active human CASP1 containing N-term His-tag was expressed in E. coli.
<b>Species</b>	Human
<b>Source</b>	E.coli
<b>Description</b>	CASP1 (also know as ICE) is a prototypical member of the caspase-family of cysteine proteases. CASP1 exists in cells as an inactive 45 kDa proenzyme. The pro-enzyme is matured by proteolysis to yield large (20 kD) and small (10 kD) subunits. The active CASP1 is a heterotetramer consisting of two large and two small subunits. To date the regulatory mechanism of CASP1 activation and the role of CASP1 in apoptosis are poorly understood.
<b>Biological Activity</b>	> 5000 units/mg
<b>Molecular Weight</b>	large (20 kD) and small (10 kD) subunitsk
<b>Form</b>	Lyophilized powder.
<b>Appearance</b>	Lyophilized powder
<b>Reconstitution</b>	Reconstitute to 1 unit per $\mu$ in PBS containing 15% glycerol.

 Tel: 1-631-559-9269 1-516-512-3133

 Email: [info@creative-biomart.com](mailto:info@creative-biomart.com)  Fax: 1-631-938-8127

 45-1 Ramsey Road, Shirley, NY 11967, USA

**Storage** The lyophilized CASP1 is stable for 1 year at -70°C. Following reconstitution in PBS, the enzyme should be aliquoted and immediately stored at -70°C. Avoid multiple freeze/thaw cycles as activity might decrease.

**Pathways** Amyotrophic lateral sclerosis (ALS); Androgen Receptor Signaling Pathway; Apoptosis; Caspase cascade in apoptosis; Cellular roles of Anthrax toxin; Cytokine Signaling in Immune system; Cytosolic DNA-sensing pathway; Direct p53 effectors; IFN-gamma pathway; IL1-mediated signaling events; Immune System; Inflammasomes; Influenza A; Innate Immunity Signaling; Interleukin-1 processing

## GENE INFORMATION

**Gene Name** CASP1 caspase 1, apoptosis-related cysteine peptidase (interleukin 1, beta, convertase) [ Homo sapiens ]

**Official Symbol** CASP1

**Synonyms** CASP1; caspase 1, apoptosis-related cysteine peptidase (interleukin 1, beta, convertase); ICE; P45; IL1BC; caspase-1; IL-1BC; IL1B-convertase; CASP1 nirs variant 1; IL-1 beta-converting enzyme; interleukin 1-B converting enzyme; Caspase-1; CASP-1; Interleukin-1 beta convertase; Interleukin-1 beta-converting enzyme; EC 3.4.22.36; OTTHUMP00000045728; OTTHUMP00000232029; OTTHUMP00000232030; OTTHUMP00000232031; OTTHUMP00000232032; OTTHUMP00000232033; OTTHUMP00000232034; OTTHUMP00000232036

**Gene ID** 834

**mRNA Refseq** NM\_033292

**Protein Refseq** NP\_150634

 Tel: 1-631-559-9269 1-516-512-3133

 Email: [info@creative-biomart.com](mailto:info@creative-biomart.com)  Fax: 1-631-938-8127

 45-1 Ramsey Road, Shirley, NY 11967, USA

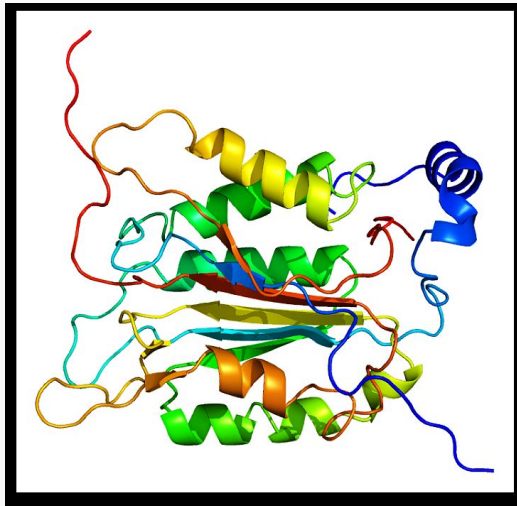
**MIM** 147678

**UniProt ID** P29466

**Chromosome Location** 11q23

**Function** cysteine-type endopeptidase activity; caspase activator activity; peptidase activity; protein binding

**Protein CASP1 PDB**  
1bmq.



 Tel: 1-631-559-9269 1-516-512-3133

 Email: [info@creative-biomart.com](mailto:info@creative-biomart.com)  Fax: 1-631-938-8127

 45-1 Ramsey Road, Shirley, NY 11967, USA