

## Recombinant Human CASP1 protein, HA-tagged

Cat. No. CASP1-432H Lot. No. (See product label)

### SPECIFICATION

<b>Product Overview</b>	Recombinant Human CASP1 protein(P29466)(1-91aa), fused with C-terminal HA tag, was expressed in E.coli.
<b>Species</b>	Human
<b>Source</b>	E.coli
<b>ProteinLength</b>	1-91aa
<b>Form</b>	If the delivery form is liquid, the default storage buffer is Tris/PBS-based buffer, 5%-50% glycerol. If the delivery form is lyophilized powder, the buffer before lyophilization is Tris/PBS-based buffer, 6% Trehalose, pH 8.0.
<b>Molecular Mass</b>	11.4 kDa
<b>Purity</b>	Greater than 85% as determined by SDS-PAGE.
<b>Storage</b>	Store at -20°C/-80°C upon receipt, aliquoting is necessary for mutiple use. Avoid repeated freeze-thaw cycles.
<b>Reconstitution</b>	We recommend that this vial be briefly centrifuged prior to opening to bring the contents to the bottom. Please reconstitute protein in deionized sterile water to a concentration of 0.1-1.0 mg/mL. We recommend to add 5-50% of glycerol (final concentration) and aliquot for long-term storage at -20°C/-80°C.

 Tel: 1-631-559-9269 1-516-512-3133

 Email: [info@creative-biomart.com](mailto:info@creative-biomart.com)  Fax: 1-631-938-8127

 45-1 Ramsey Road, Shirley, NY 11967, USA

**AA Sequence** MADKVLKEKRKLFIRSMGEGTINGLLDELLQTRVLNKEEMEKVKRENATVMDKTRAL  
IDSVIPKGAQACQCICITYICEEDSYLAGTLGLSA

## GENE INFORMATION

**Gene Name** [CASP1 caspase 1, apoptosis-related cysteine peptidase \[ Homo sapiens \]](#)

**Official Symbol** [CASP1](#)

**Synonyms** CASP1; caspase 1, apoptosis-related cysteine peptidase; caspase 1, apoptosis related cysteine peptidase (interleukin 1, beta, convertase) , caspase 1, apoptosis related cysteine protease (interleukin 1, beta, convertase) , IL1BC; caspase-1; caspase 1; ICE; interleukin 1; beta; convertase; IL1B-convertase; CASP1 nirs variant 1; IL-1 beta-converting enzyme; interleukin 1, beta, convertase; interleukin 1-B converting enzyme; caspase 1, apoptosis-related cysteine peptidase (interleukin 1, beta, convertase); P45; IL1BC;

**Gene ID** [834](#)

**mRNA Refseq** [NM\\_001223](#)

**Protein Refseq** [NP\\_001214](#)

**MIM** [147678](#)

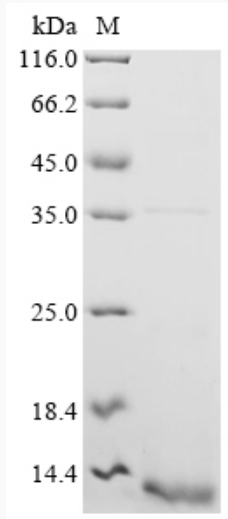
**UniProt ID** [P29466](#)

 Tel: 1-631-559-9269 1-516-512-3133

 Email: [info@creative-biomart.com](mailto:info@creative-biomart.com)  Fax: 1-631-938-8127

 45-1 Ramsey Road, Shirley, NY 11967, USA

**SDS-PAGE**



 Tel: 1-631-559-9269 1-516-512-3133

 Email: [info@creative-biomart.com](mailto:info@creative-biomart.com)  Fax: 1-631-938-8127

 45-1 Ramsey Road, Shirley, NY 11967, USA