

Recombinant Pig CASP1 protein, His&Myc-tagged

Cat. No. CASP1-473P Lot. No. (See product label)

SPECIFICATION

Product Overview	Recombinant Pig CASP1 protein(Q9N2I1)(120-297aa), fused with N-terminal His tag and C-terminal Myc tag, was expressed in E.coli.
Species	Pig
Source	E.coli
ProteinLength	120-297a.a.
Tag	His&Myc
Form	If the delivery form is liquid, the default storage buffer is Tris/PBS-based buffer, 5%-50% glycerol. If the delivery form is lyophilized powder, the buffer before lyophilization is Tris/PBS-based buffer, 6% Trehalose, pH 8.0.
Molecular Mass	27.3 kDa
Purity	Greater than 90% as determined by SDS-PAGE.
Storage	Store at -20°C/-80°C upon receipt, aliquoting is necessary for mutiple use. Avoid repeated freeze-thaw cycles.
Reconstitution	We recommend that this vial be briefly centrifuged prior to opening to bring the contents to the bottom. Please reconstitute protein in deionized sterile water to a concentration of 0.1-1.0 mg/mL.We recommend to add 5-50% of glycerol (final

 Tel: 1-631-559-9269 1-516-512-3133

 Email: info@creative-biomart.com  Fax: 1-631-938-8127

 45-1 Ramsey Road, Shirley, NY 11967, USA

concentration) and aliquot for long-term storage at -20°C/-80°C.

AA Sequence

NPVKPASSEPRGSLKLCPPDIAQRLWKEKSAEIYPIMGKSIRTRLALIICNTEFENLPR
 RDGADVDIRDMKILLEDLGYSVDVRENLTASDMAIELKAFARPEHKSSDSTFLVLMS
 HGIQAGICGKKYSEEVPDVLEVNTVFQILNTLNCPSLKD KPKV VIIIQACRGEKQGVVWI
 KD

GENE INFORMATION

Gene Name

CASP1 caspase 1, apoptosis-related cysteine peptidase [*Sus scrofa*]

Official Symbol

CASP1

Synonyms

CASP1; caspase 1, apoptosis-related cysteine peptidase; caspase-1; ICE; p45;
 CASP-1; IL-1BC; IL-1 beta-converting enzyme; interleukin-1 beta convertase;
 interleukin-1 beta converting enzyme; interleukin-1 beta-converting enzyme; caspase
 1, apoptosis-related cysteine peptidase (interleukin 1, beta, convertase);

Gene ID

397319

mRNA Refseq

NM_214162

Protein Refseq

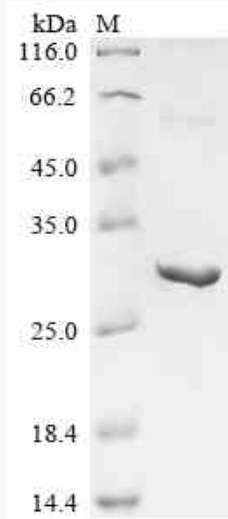
NP_999327

 Tel: 1-631-559-9269 1-516-512-3133

 Email: info@creative-biomart.com  Fax: 1-631-938-8127

 45-1 Ramsey Road, Shirley, NY 11967, USA

SDS-PAGE



 Tel: 1-631-559-9269 1-516-512-3133

 Email: info@creative-biomart.com  Fax: 1-631-938-8127

 45-1 Ramsey Road, Shirley, NY 11967, USA