

Recombinant Mouse CASP1 protein, GST-tagged

Cat. No. CASP1-5743M Lot. No. (See product label)

SPECIFICATION

Product Overview	Recombinant Mouse CASP1 protein(119-296 aa), fused with N-terminal GST tag, was expressed in E. coli.
Species	Mouse
Source	E.coli
ProteinLength	119-296 aa
Tag	N-GST
Form	The purified protein was Lyophilized from sterile PBS (58mM Na ₂ HPO ₄ , 17mM NaH ₂ PO ₄ , 68mM NaCl, pH7.4). 5 % trehalose and 5 % mannitol are added as protectant before lyophilization.
Purity	85%, by SDS-PAGE with Coomassie Brilliant Blue staining.
Storage	Short-term storage: Store at 2-8°C for (1-2 weeks). Long-term storage: Aliquot and store at -20°C to -80°C for up to 3 months, reconstitution with sterile water and addition of an equal volume of glycerol. Avoid repeat freeze-thaw cycles.
Reconstitution	Reconstitute at 0.25 µg/µl in 200 µl sterile water for short-term storage. After reconstitution with sterile water, if glycerol has no effect on subsequent experiments, it is recommended to add an equal volume of glycerol for long-term storage.

 Tel: 1-631-559-9269 1-516-512-3133

 Email: info@creative-biomart.com  Fax: 1-631-938-8127

 45-1 Ramsey Road, Shirley, NY 11967, USA

AA Sequence

DNPAMPTSSGSEGNVKLCSLEEAQRIWKQKSAEIYPIMDKSSRTRLALIICNEEFDSI
PRRTGAEVDITGMTMLLQNLGYSDVDVKKNLTASDMTTELEAFahrPEHKTSdstFLV
FMSHGIREGICGKKHSEQVPDILQLNAIFNMLNtKNcPSLkDKPKViiiQACrGDSPGV
VWFK

GENE INFORMATION

Gene Name [Casp1 caspase 1 \[Mus musculus \]](#)

Official Symbol [CASP1](#)

Synonyms

CASP1; caspase 1; caspase-1; p45; CASP-1; IL-1BC; IL-1B converting enzyme; IL-1 beta-converting enzyme; interleukin-1 beta convertase; interleukin 1 beta-converting enzyme; interleukin-1 beta-converting enzyme; ICE; Il1bc;

Gene ID [12362](#)

mRNA Refseq [NM_009807](#)

Protein Refseq [NP_033937](#)

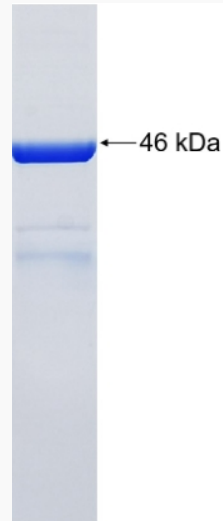
 Tel: 1-631-559-9269 1-516-512-3133

 Email: info@creative-biomart.com  Fax: 1-631-938-8127

 45-1 Ramsey Road, Shirley, NY 11967, USA



SDS-PAGE



Tel: 1-631-559-9269 1-516-512-3133

Email: info@creative-biomart.com Fax: 1-631-938-8127

45-1 Ramsey Road, Shirley, NY 11967, USA