

## Recombinant Human CASP10 Protein, GST-Tagged

Cat. No. CASP10-0414H Lot. No. (See product label)

### SPECIFICATION

<b>Product Overview</b>	Human CASP10 full-length ORF (NP_001221.2, 1 a.a. - 479 a.a.) recombinant protein with GST-tag at N-terminal.
<b>Species</b>	Human
<b>Source</b>	Wheat Germ
<b>Description</b>	<p>This gene encodes a protein which is a member of the cysteine-aspartic acid protease (caspase) family. Sequential activation of caspases plays a central role in the execution-phase of cell apoptosis. Caspases exist as inactive proenzymes which undergo proteolytic processing at conserved aspartic residues to produce two subunits, large and small, that dimerize to form the active enzyme. This protein cleaves and activates caspases 3 and 7, and the protein itself is processed by caspase 8. Mutations in this gene are associated with type IIA autoimmune lymphoproliferative syndrome, non-Hodgkin lymphoma and gastric cancer. Alternatively spliced transcript variants encoding different isoforms have been described for this gene. [provided by RefSeq, Apr 2011]</p>
<b>Molecular Mass</b>	81 kDa
<b>AA Sequence</b>	<p>MKSQGQHWYSSSDKNCKVSFREKLLIIDSNLGVQDVENLKFLCIGLVPNKKLEKSSS            ASDVFEHLLAEDLLSEEDPFFLAELLYIIRQKLLQHLNCTKEEVERLLPTRQRVSLFR            NLLYELSEGIDSENKDMIFLLKDSLPKTEMTSLSFLAFLEKQGKIDEDNLTCLDLCK            TVVPKLLRNIEKYKREKAIQIVTPVDKEAESYQGEEELVSQTDVKTFFLEALPRAAVY</p>

 Tel: 1-631-559-9269 1-516-512-3133

 Email: [info@creative-biomart.com](mailto:info@creative-biomart.com)  Fax: 1-631-938-8127

 45-1 Ramsey Road, Shirley, NY 11967, USA

RMNRNHRGLCVIVNNHSFTSLKDRQGTHKDAEILSHVFQWLGFVHIHNNVTKVEM  
 EMVLQKQKCNPAHADGDCFVFCILTHGRFGAVYSSDEALIPREIMSHFTALQCPRLA  
 EKPKLFFIQACQGEEIQPSVSIADALNPEQAPTSLQDSIPAEADFLLGLATVPGYVSF  
 RHVEEGSWYIQSLCNHLKLVPRHEDILSILTAVNDDVSRRVKQGTGKQMPQPAFT  
 LRKKLVFPVPLDALSL

**Applications**  
 Enzyme-linked Immunoabsorbent Assay  
 Western Blot (Recombinant protein)  
 Antibody Production  
 Protein Array

**Storage** Store at -80 centigrade. Aliquot to avoid repeated freezing and thawing.

**Storage Buffer** 50 mM Tris-HCl, 10 mM reduced Glutathione, pH=8.0 in the elution buffer.

## GENE INFORMATION

**Gene Name** [CASP10 caspase 10, apoptosis-related cysteine peptidase \[ Homo sapiens \]](#)

**Official Symbol** [CASP10](#)

**Synonyms** CASP10; caspase 10, apoptosis-related cysteine peptidase; caspase 10, apoptosis related cysteine protease; caspase-10; MCH4; CASP-10; FADD-like ICE2; apoptotic protease MCH-4; ICE-like apoptotic protease 4; interleukin-1B-converting enzyme 2; caspase 10, apoptosis-related cysteine protease; FAS-associated death domain protein interleukin-1B-converting enzyme 2; ALPS2; FLICE2;

**Gene ID** [843](#)

**mRNA Refseq** [NM\\_001206524](#)

 Tel: 1-631-559-9269 1-516-512-3133

 Email: [info@creative-biomart.com](mailto:info@creative-biomart.com)  Fax: 1-631-938-8127

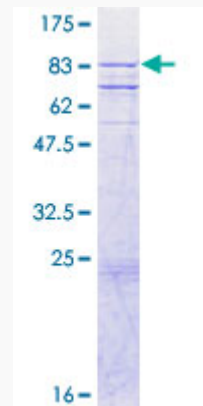
 45-1 Ramsey Road, Shirley, NY 11967, USA

**Protein Refseq** NP\_001193453

**MIM** 601762

**UniProt ID** Q92851

**Quality Control  
Testing**



12.5% SDS-PAGE Stained with Coomassie Blue.

 Tel: 1-631-559-9269 1-516-512-3133

 Email: [info@creative-biomart.com](mailto:info@creative-biomart.com)  Fax: 1-631-938-8127

 45-1 Ramsey Road, Shirley, NY 11967, USA