

## Recombinant Human CASP14 Protein (Ser2-Gln242), C-His tagged

Cat. No. CASP14-1591H Lot. No. (See product label)

### SPECIFICATION

|                         |   |
|-------------------------|---|
| <b>Product Overview</b> | Recombinant human CASP14 (Ser2-Gln242) fused with the C-terminal His tag was expressed in E. coli.  |
| <b>Species</b>          | Human   |
| <b>Source</b>           | E.coli  |
| <b>ProteinLength</b>    | Ser2-Gln242   |
| <b>Form</b>             | Lyophilized powder/frozen liquid  |
| <b>Molecular Mass</b>   | 26.51 kDa   |
| <b>Purity</b>           | >90% as determined by SDS-PAGE.   |
| <b>Notes</b>            | For research use only.  |
| <b>Storage</b>          | Use a manual defrost freezer and avoid repeated freeze thaw cycles.<br>Store at 2 to 8 centigrade for one week.<br>Store at -20 to -80 centigrade for twelve months from the date of receipt. |
| <b>Storage Buffer</b>   | Supplied as solution form in PBS or lyophilized from PBS.   |
| <b>Reconstitution</b>   | Reconstitute in sterile water for a stock solution.   |

 Tel: 1-631-559-9269 1-516-512-3133

 Email: [info@creative-biomart.com](mailto:info@creative-biomart.com)  Fax: 1-631-938-8127

 45-1 Ramsey Road, Shirley, NY 11967, USA

**Shipping** They are shipped out with dry ice/blue ice unless customers require otherwise.

## GENE INFORMATION

**Gene Name** [CASP14 caspase 14, apoptosis-related cysteine peptidase \[ Homo sapiens \(human\) \]](#)

**Official Symbol** [CASP14](#)

**Synonyms** CASP14; caspase 14, apoptosis-related cysteine peptidase; caspase 14, apoptosis related cysteine protease; caspase-14; apoptosis related cysteine protease; MGC119078; MGC119079; MICE; CASP-14; apoptosis-related cysteine protease; caspase 14, apoptosis-related cysteine protease;

**Gene ID** [23581](#)

**mRNA Refseq** [NM\\_012114](#)

**Protein Refseq** [NP\\_036246](#)

**MIM** [605848](#)

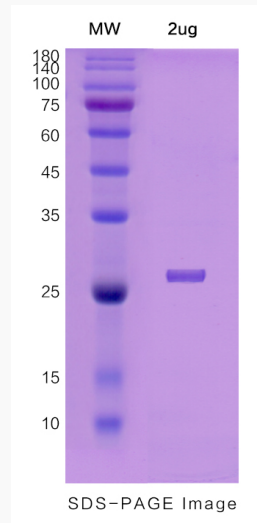
**UniProt ID** [P31944](#)

 Tel: 1-631-559-9269 1-516-512-3133

 Email: [info@creative-biomart.com](mailto:info@creative-biomart.com)  Fax: 1-631-938-8127

 45-1 Ramsey Road, Shirley, NY 11967, USA

**SDS-PAGE**



 Tel: 1-631-559-9269 1-516-512-3133

 Email: [info@creative-biomart.com](mailto:info@creative-biomart.com)  Fax: 1-631-938-8127

 45-1 Ramsey Road, Shirley, NY 11967, USA