

Recombinant Human CASP2 Protein, GST-Tagged

Cat. No. CASP2-0419H Lot. No. (See product label)

SPECIFICATION

Product Overview	Human CASP2 full-length ORF (AAH02427.2, 1 a.a. - 452 a.a.) recombinant protein with GST-tag at N-terminal.
Species	Human
Source	Wheat Germ
ProteinLength	1-452 aa
Description	This gene encodes a member of the cysteine-aspartic acid protease (caspase) family. Caspases mediate cellular apoptosis through the proteolytic cleavage of specific protein substrates. The encoded protein may function in stress-induced cell death pathways, cell cycle maintenance, and the suppression of tumorigenesis. Increased expression of this gene may play a role in neurodegenerative disorders including Alzheimer's disease, Huntington's disease and temporal lobe epilepsy. Alternatively spliced transcript variants encoding multiple isoforms have been observed for this gene. [provided by RefSeq, Jan 2011]
Molecular Mass	77.1 kDa
AA Sequence	MAAPSAGSWSTFQHKELMAADRGRRLGVCGMHPHHQETLKKNRVVLAKQLLLSE LLEHLLEKDIITLEMRELIQAKVGSFSQNVLLNLLPKRGPQAFDAFCEALRETKQGH LEDMLLTLSGLQHVLPLPLSCDYDLSLFPVCECPLYKKLRLSTDTVEHSLDNKDG PLCLQVKPCTPEFYQTHFQLAYRLQSRPRGLALVLSNVHFTGEKELEFRSGGDVDH STLVTLFKLLGYDVHVLCDQTAQEMQEKLQNFAQLPAHRVTDSCIVALLSHGVEGAI

 Tel: 1-631-559-9269 1-516-512-3133

 Email: info@creative-biomart.com  Fax: 1-631-938-8127

 45-1 Ramsey Road, Shirley, NY 11967, USA

YGVDPGKLLQLQEVFQLFDNANCPQLQNKPKMFFIQACRGDETDGRGVDQQDGKNHA
 GSPGCEESDAGKEKLPKMLPTRSDMICGYACLKGTAAAMRNTKRGSWYIEALAQVF
 SERACDMHVADMLVKVNALIKDREGYAPGTEFHRCKEMSEY CSTLCRHLYLFP GHP
 PT

Applications
 Enzyme-linked Immunoabsorbent Assay
 Western Blot (Recombinant protein)
 Antibody Production
 Protein Array

Storage Store at -80 centigrade. Aliquot to avoid repeated freezing and thawing.

Storage Buffer 50 mM Tris-HCl, 10 mM reduced Glutathione, pH=8.0 in the elution buffer.

GENE INFORMATION

Gene Name [CASP2 caspase 2, apoptosis-related cysteine peptidase \[Homo sapiens \]](#)

Official Symbol [CASP2](#)

Synonyms CASP2; caspase 2, apoptosis-related cysteine peptidase; NEDD2, neural precursor cell expressed, developmentally down regulated 2; caspase-2; ICH1; PPP1R57; protein phosphatase 1; regulatory subunit 57; protease ICH-1; protein phosphatase 1, regulatory subunit 57; neural precursor cell expressed developmentally down-regulated protein 2; NEDD2; CASP-2; NEDD-2;

Gene ID [835](#)

mRNA Refseq [NM_001224](#)

Protein Refseq [NP_001215](#)

 Tel: 1-631-559-9269 1-516-512-3133

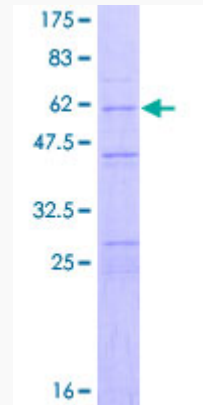
 Email: info@creative-biomart.com  Fax: 1-631-938-8127

 45-1 Ramsey Road, Shirley, NY 11967, USA

MIM 600639

UniProt ID P42575

**Quality Control
Testing**



12.5% SDS-PAGE Stained with Coomassie Blue.

 Tel: 1-631-559-9269 1-516-512-3133

 Email: info@creative-biomart.com  Fax: 1-631-938-8127

 45-1 Ramsey Road, Shirley, NY 11967, USA