

Active Recombinant Human CASP3 Protein, His-tagged

Cat. No. CASP3-01H Lot. No. (See product label)

SPECIFICATION

Product Overview	Human caspase 3 (CASP3), also known as CPP32 and apopain, a.a. 1 – 277 (end) with C-terminal His-tag, expressed in an E. coli expression system.
Species	Human
Source	E.coli
ProteinLength	1-277
Description	The protein encoded by this gene is a cysteine-aspartic acid protease that plays a central role in the execution-phase of cell apoptosis. The encoded protein cleaves and inactivates poly(ADP-ribose) polymerase while it cleaves and activates sterol regulatory element binding proteins as well as caspases 6, 7, and 9. This protein itself is processed by caspases 8, 9, and 10. It is the predominant caspase involved in the cleavage of amyloid-beta 4A precursor protein, which is associated with neuronal death in Alzheimer's disease.
Form	Aqueous buffer solution
Bio-activity	≥ 6,784 pmol/min/μg
Molecular Mass	17 kDa and 13 kDa
AA Sequence	MENTENSVDSKSIKNLEPKIIHGSESMDSGISLDNSYKMDYPEMGLCIIINNKNFHKST GMTSRSGTDVDAANLRETFRNLKYEVNRKNDLRTREEIVELMRDVSKEDHSKRSSFV

 Tel: 1-631-559-9269 1-516-512-3133

 Email: info@creative-biomart.com  Fax: 1-631-938-8127

 45-1 Ramsey Road, Shirley, NY 11967, USA

CVLLSHGEEGIIFGTNGPVDLKKITNFFRGDRCSRSLTGKPKLFIIQACRGTELDGCIET
 DSGVDDDMACHKIPVEADFLYAYSTAPGYYSWRNSKDGSWFIQSLCAMLKQYADK
 LEFMHILTRVNRKVATEFESFSFDATFHAKKQIPCIVSMLTKELYFYHHHHHHH

Purity	> 99%
Applications	Enzyme kinetics, screening inhibitors, and selectivity profiling
Stability	> 6 months
Storage	Store at -80 centigrade
Storage Buffer	40 mM Tris-HCl, pH 8.0, 110 mM NaCl, 2.2 mM KCl, 0.04% Tween-20, 20% glycerol and 3 mM DTT

GENE INFORMATION

Gene Name	CASP3 caspase 3 [Homo sapiens (human)]
Official Symbol	CASP3
Synonyms	CASP3; caspase 3; CPP32; SCA-1; CPP32B; caspase-3; CASP-3; CPP-32; PARP cleavage protease; SREBP cleavage activity 1; apopain; caspase 3, apoptosis-related cysteine peptidase; caspase 3, apoptosis-related cysteine protease; cysteine protease CPP32; procaspase3; protein Yama
Gene ID	836
mRNA Refseq	NM_004346
Protein Refseq	NP_004337

 Tel: 1-631-559-9269 1-516-512-3133

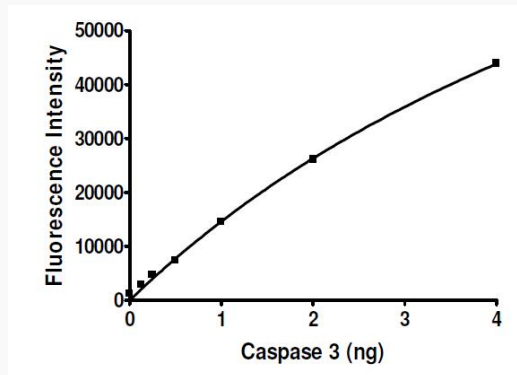
 Email: info@creative-biomart.com  Fax: 1-631-938-8127

 45-1 Ramsey Road, Shirley, NY 11967, USA

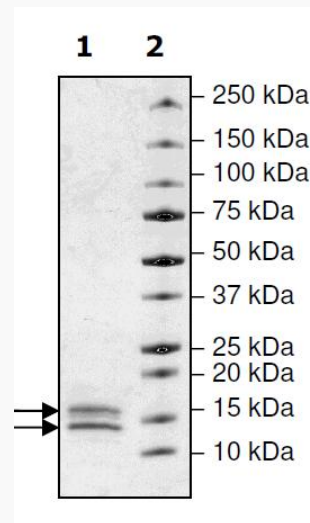
MIM 600636

UniProt ID P42574

Caspase 3 activity



SDS-PAGE of CASP3



Lane 1: 2 g Caspase 3; Lane 2: Protein Markers

Tel: 1-631-559-9269 1-516-512-3133

Email: info@creative-biomart.com Fax: 1-631-938-8127

45-1 Ramsey Road, Shirley, NY 11967, USA