

Recombinant Human CASP3 Protein, Myc/DDK-tagged, C13 and N15-labeled

Cat. No. CASP3-1333H Lot. No. (See product label)

SPECIFICATION

Product Overview	CASP3 MS Standard C13 and N15-labeled recombinant protein (NP_004337) with a C-terminal MYC/DDK tag, was expressed in HEK293 cells.
Species	Human
Source	HEK293
ProteinLength	1-277 aa
Description	The protein encoded by this gene is a cysteine-aspartic acid protease that plays a central role in the execution-phase of cell apoptosis. The encoded protein cleaves and inactivates poly(ADP-ribose) polymerase while it cleaves and activates sterol regulatory element binding proteins as well as caspases 6, 7, and 9. This protein itself is processed by caspases 8, 9, and 10. It is the predominant caspase involved in the cleavage of amyloid-beta 4A precursor protein, which is associated with neuronal death in Alzheimer's disease.
Molecular Mass	31.6 kDa
AA Sequence	MENTENSVDSKSIKNLEPKIIHGSESMDSGISLDNSYKMDYPEMGLCIIINNKNFHKST GMTSRSGTDVDAANLRETFRNLKYEVRNKNLDTREEIVELMRDVSKEDHSKRSSFV CVLLSHGEEGIIFGTNGPVDLKKITNFFRGDRCSRSLTGKPKLFIIQACRGTELDGCIET DSGVDDDMACHKIPVEADFLYAYSTAPGYYSWRNSKDGSWFIQSLCAMLKQYADK LEFMHILTRVNRKVATEFESFSFDATFHAKKQIPCIVSMLTKELYFYHTRTRPLEQKLI

 Tel: 1-631-559-9269 1-516-512-3133

 Email: info@creative-biomart.com  Fax: 1-631-938-8127

 45-1 Ramsey Road, Shirley, NY 11967, USA



SEEDLAANDILDYKDDDDKV

Purity > 80% as determined by SDS-PAGE and Coomassie blue staining

Stability Stable for 3 months from receipt of products under proper storage and handling conditions.

Storage Store at -80 centigrade. Avoid repeated freeze-thaw cycles.

Concentration 50 µg/mL as determined by BCA

Storage Buffer 100 mM glycine, 25 mM Tris-HCl, pH 7.3.

GENE INFORMATION

Gene Name CASP3 caspase 3 [Homo sapiens (human)]

Official Symbol CASP3

Synonyms CASP3; caspase 3, apoptosis-related cysteine peptidase; caspase 3, apoptosis related cysteine protease; caspase-3; apopain; CPP32; CPP32B; Yama; CASP-3; CPP-32; procaspase3; protein Yama; PARP cleavage protease; cysteine protease CPP32; SREBP cleavage activity 1; caspase 3, apoptosis-related cysteine protease; SCA-1;

Gene ID 836

mRNA Refseq NM_004346

Protein Refseq NP_004337

Tel: 1-631-559-9269 1-516-512-3133

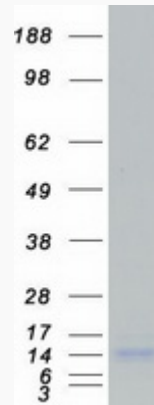
Email: info@creative-biomart.com Fax: 1-631-938-8127

45-1 Ramsey Road, Shirley, NY 11967, USA

MIM 600636

UniProt ID P42574

SDS-PAGE



 Tel: 1-631-559-9269 1-516-512-3133

 Email: info@creative-biomart.com  Fax: 1-631-938-8127

 45-1 Ramsey Road, Shirley, NY 11967, USA