

Active Recombinant Full Length Human CASP3, His-tagged Low Endotoxin

Cat. No. CASP3-1642H **Lot. No.** (See product label)

SPECIFICATION

Product Overview	Active Recombinant Full Length Human CASP3(Q5IS54) (Ser29-His277) was expressed in E.coli with a polyhistidine tag at the C-terminus.
Species	Human
Source	E.coli
ProteinLength	29-277 aa
Form	Lyophilized from sterile 20mM HEPES, 100mM NaCl, 1mM EDTA, 10% Sucrose, 0.1% chaps, pH 7.5.
Bio-activity	Measured by its ability to cleave the fluorogenic peptide substrate Ac-DEVD-AFC. The specific activity is > 5000 pmoles/min/μg.
Molecular Mass	The recombinant human caspase3 consists of 259 amino acids and predicts a molecular mass of 29.9 KDa. It migrates as an approximately 17 and 15 KDa band in SDS-PAGE under reducing conditions.
Purity	(48.4+48.1) % as determined by SDS-PAGE
Storage	Store it under sterile conditions at -20°C to -80°C upon receiving. Recommend to aliquot the protein into smaller quantities for optimal storage. Avoid repeated freeze-thaw cycles.

 Tel: 1-631-559-9269 1-516-512-3133

 Email: info@creative-biomart.com  Fax: 1-631-938-8127

 45-1 Ramsey Road, Shirley, NY 11967, USA

Reconstitution It is recommended that sterile water be added to the vial to prepare a stock solution of 0.2 ug/ul. Centrifuge the vial at 4°C before opening to recover the entire contents.

GENE INFORMATION

Gene Name [CASP3 caspase 3, apoptosis-related cysteine peptidase \[Homo sapiens \]](#)

Official Symbol [CASP3](#)

Synonyms CASP3; caspase 3, apoptosis-related cysteine peptidase; caspase 3, apoptosis related cysteine protease; caspase-3; apopain; CPP32; CPP32B; Yama; CASP-3; CPP-32; procaspase3; protein Yama; PARP cleavage protease; cysteine protease CPP32; SREBP cleavage activity 1; caspase 3, apoptosis-related cysteine protease; SCA-1;

Gene ID [836](#)

mRNA Refseq [NM_004346](#)

Protein Refseq [NP_004337](#)

MIM [600636](#)

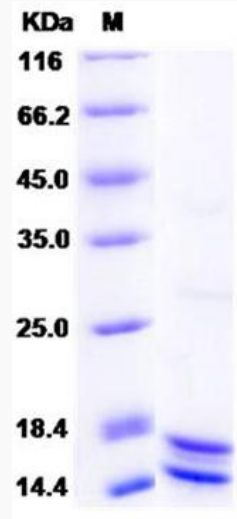
UniProt ID [P42574](#)

 Tel: 1-631-559-9269 1-516-512-3133

 Email: info@creative-biomart.com  Fax: 1-631-938-8127

 45-1 Ramsey Road, Shirley, NY 11967, USA

SDS-PAGE



 Tel: 1-631-559-9269 1-516-512-3133

 Email: info@creative-biomart.com  Fax: 1-631-938-8127

 45-1 Ramsey Road, Shirley, NY 11967, USA