

# Recombinant Full Length Human CASP3 Protein, C-Flag-tagged

**Cat. No.** CASP3-946HFL    **Lot. No.** (See product label)

## SPECIFICATION

<b>Product Overview</b>	Recombinant Full Length Human CASP3 Protein, fused to Flag-tag at C-terminus, was expressed in Mammalian cells.
<b>Species</b>	Human
<b>Source</b>	Mammalian Cells
<b>Description</b>	The protein encoded by this gene is a cysteine-aspartic acid protease that plays a central role in the execution-phase of cell apoptosis. The encoded protein cleaves and inactivates poly(ADP-ribose) polymerase while it cleaves and activates sterol regulatory element binding proteins as well as caspases 6, 7, and 9. This protein itself is processed by caspases 8, 9, and 10. It is the predominant caspase involved in the cleavage of amyloid-beta 4A precursor protein, which is associated with neuronal death in Alzheimer's disease.
<b>Form</b>	25 mM Tris HCl, pH 7.3, 100 mM glycine, 10% glycerol.
<b>Molecular Mass</b>	31.4 kDa
<b>AA Sequence</b>	MENTENSVDSKSIKNLEPKIIHGSESMDSGISLDNSYKMDYPEMGLCIIINNKNFHKST GMTSRSGTDVD AANLRETFRNLYEVRNKNDL TREEIVELMRDVSKEDHSKRSSFV CVLLSHGEEGIIFGTNGPVDLKKIT NFFRGDRCSRSLTGKPKLFIIQACRGTELDGCIET DSGVDDDMACHKIPVEADFLYAYSTAPGYYSWRNSK DGSWFIQSLCAMLKQYADK LEFMHILTRVNRKVATEFESFSFDATFHAKKQIPCIVSMLTKELYFYHTRTRPLEQKLI

 Tel: 1-631-559-9269    1-516-512-3133

 Email: [info@creative-biomart.com](mailto:info@creative-biomart.com)     Fax: 1-631-938-8127

 45-1 Ramsey Road, Shirley, NY 11967, USA

SEEDLAANDILDYKDDDDKV

**Purity** > 80% as determined by SDS-PAGE and Coomassie blue staining.

**Stability** Stable for 12 months from the date of receipt of the product under proper storage and handling conditions. Avoid repeated freeze-thaw cycles.

**Storage** Store at -80 centigrade.

**Concentration** >50 ug/mL as determined by microplate BCA method.

**Preparation** Recombinant protein was captured through anti-DDK affinity column followed by conventional chromatography steps.

**Protein Families** Druggable Genome, ES Cell Differentiation/IPS, Protease

**Protein Pathways** Alzheimer's disease, Amyotrophic lateral sclerosis (ALS), Apoptosis, Colorectal cancer, Epithelial cell signaling in Helicobacter pylori infection, Huntington's disease, MAPK signaling pathway, Natural killer cell mediated cytotoxicity, p53 signaling pathway, Parkinson's disease, Pathways in cancer, Viral myocarditis

**Full Length** Full L.

## GENE INFORMATION

**Gene Name** [CASP3 caspase 3 \[ Homo sapiens \(human\) \]](#)

**Official Symbol** [CASP3](#)

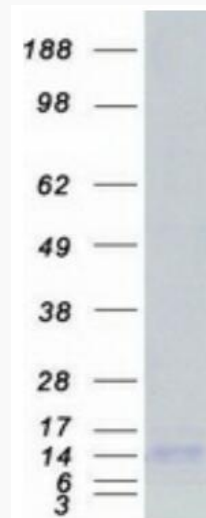
**Synonyms** CPP32; SCA-1; CPP32B

 Tel: 1-631-559-9269 1-516-512-3133

 Email: [info@creative-biomart.com](mailto:info@creative-biomart.com)  Fax: 1-631-938-8127

 45-1 Ramsey Road, Shirley, NY 11967, USA

Gene ID	836
mRNA Refseq	NM_032991.3
Protein Refseq	NP_116786.1
MIM	600636
UniProt ID	P42574



Coomassie blue staining of purified CASP3 protein.

Tel: 1-631-559-9269 1-516-512-3133

Email: [info@creative-biomart.com](mailto:info@creative-biomart.com) Fax: 1-631-938-8127

45-1 Ramsey Road, Shirley, NY 11967, USA