

## Recombinant Human CASP4 Protein, GST-Tagged

Cat. No. CASP4-0424H Lot. No. (See product label)

### SPECIFICATION

<b>Product Overview</b>	Human CASP4 full-length ORF (AAH17839, 1 a.a. - 377 a.a.) recombinant protein with GST-tag at N-terminal.
<b>Species</b>	Human
<b>Source</b>	Wheat Germ
<b>Description</b>	This gene encodes a protein that is a member of the cysteine-aspartic acid protease (caspase) family. Sequential activation of caspases plays a central role in the execution-phase of cell apoptosis. Caspases exist as inactive proenzymes composed of a prodomain and a large and small protease subunit. Activation of caspases requires proteolytic processing at conserved internal aspartic residues to generate a heterodimeric enzyme consisting of the large and small subunits. This caspase is able to cleave and activate its own precursor protein, as well as caspase 1 precursor. When overexpressed, this gene induces cell apoptosis. Alternative splicing results in transcript variants encoding distinct isoforms. [provided by RefSeq, Jul 2008]
<b>Molecular Mass</b>	67.21 kDa
<b>AA Sequence</b>	MAEGNHRKKPLKVLESLGKDFLTGVLDNLVEQNVLNWKEEEKKKYYDAKTEDKVRV MADSMQEKQRMAGQMLLQTFNIDQISPNKKAHPNMEAGPPESGESTDALKLCPH EEFLRLCKERAEIYPIKERNRTRLALIICNTEFDHLPPRNGADFDITGMKELLEGLD YSVDVEENLTARDMESALRAFATRPEHKSSDSTFLVLM SHGILEGICGTVHDEKKPD VLLYDTIFQIFNNRNCLSLKDKPKVIVQACRGANR GELWVRD SPASLEVASSQSEN

 Tel: 1-631-559-9269 1-516-512-3133

 Email: [info@creative-biomart.com](mailto:info@creative-biomart.com)  Fax: 1-631-938-8127

 45-1 Ramsey Road, Shirley, NY 11967, USA

LEEDAVYKTHVEKDFIAFCSSTPHNVSWRDSTMGSIFITQLITCFQKYSWCCHLEEVF  
RKVQSFETPRAKAQMPTIERLSMTRYFYLFPGN

**Applications**  
 Enzyme-linked Immunoabsorbent Assay  
 Western Blot (Recombinant protein)  
 Antibody Production  
 Protein Array

**Storage** Store at -80 centigrade. Aliquot to avoid repeated freezing and thawing.

**Storage Buffer** 50 mM Tris-HCl, 10 mM reduced Glutathione, pH=8.0 in the elution buffer.

## GENE INFORMATION

**Gene Name** [CASP4 caspase 4, apoptosis-related cysteine peptidase \[ Homo sapiens \]](#)

**Official Symbol** [CASP4](#)

**Synonyms**  
 CASP4; caspase 4, apoptosis-related cysteine peptidase; caspase 4, apoptosis related cysteine protease; caspase-4; ICE(rel)II; ICH 2; TX; CASP-4; ICE(rel)-II; protease TX; protease ICH-2; apoptotic cysteine protease Mih1/TX; caspase 4, apoptosis-related cysteine protease; ICH-2; Mih1/TX; ICEREL-II;

**Gene ID** [837](#)

**mRNA Refseq** [NM\\_001225](#)

**Protein Refseq** [NP\\_001216](#)

**MIM** [602664](#)

 Tel: 1-631-559-9269 1-516-512-3133

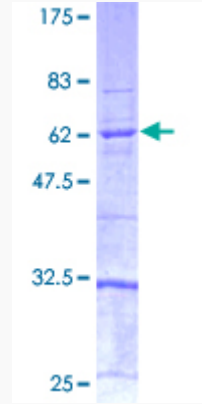
 Email: [info@creative-biomart.com](mailto:info@creative-biomart.com)  Fax: 1-631-938-8127

 45-1 Ramsey Road, Shirley, NY 11967, USA

UniProt ID

P49662

Quality Control  
Testing



12.5% SDS-PAGE Stained with Coomassie Blue.

 Tel: 1-631-559-9269 1-516-512-3133

 Email: [info@creative-biomart.com](mailto:info@creative-biomart.com)  Fax: 1-631-938-8127

 45-1 Ramsey Road, Shirley, NY 11967, USA