

Recombinant Human CASP5 Protein (137-327 aa), His-tagged

Cat. No. CASP5-1348H Lot. No. (See product label)

SPECIFICATION

Product Overview	Recombinant Human CASP5 Protein (137-327 aa) is produced by Yeast expression system. This protein is fused with a 6xHis tag at the N-terminal. Research Area: Cell Biology. Protein Description: Partial.
Species	Human
Source	Yeast
ProteinLength	137-327 aa
Description	Mediator of programmed cell death (apoptosis).
Form	Tris-based buffer, 50% glycerol
Molecular Mass	23.8 kDa
AA Sequence	DQKITSVKPLLQIEAGPPESAESTNILKLCPREEFRLRLCKKNHDEIYPIKKREDRRRLA LIICNTKFDHLPARNGAHYDIVGMKRLQLGLGYTVVDEKNLTARDMESVLRFAAARP EHKSSDSTFLVLM SHGILEGICGTAHKKKKPDVLLYDTIFQIFNNRNCLSLKDKPKVIIV QACRGEKHGELWVRD
Purity	> 90% as determined by SDS-PAGE.
Notes	Repeated freezing and thawing is not recommended. Store working aliquots at 4 centigrade for up to one week.

 Tel: 1-631-559-9269 1-516-512-3133

 Email: info@creative-biomart.com  Fax: 1-631-938-8127

 45-1 Ramsey Road, Shirley, NY 11967, USA

Storage The shelf life is related to many factors, storage state, buffer ingredients, storage temperature and the stability of the protein itself. Generally, the shelf life of liquid form is 6 months at -20 centigrade/-80 centigrade. The shelf life of lyophilized form is 12 months at -20 centigrade/-80 centigrade.

Concentration A hardcopy of COA with reconstitution instruction is sent along with the products. Please refer to it for detailed information.

GENE INFORMATION

Gene Name [CASP5 caspase 5, apoptosis-related cysteine peptidase \[Homo sapiens \]](#)

Official Symbol [CASP5](#)

Synonyms CASP5; caspase-5; ICE(rel)III; CASP-5; TY protease; protease TY; ICE(rel)-III; protease ICH-3; ICH-3; ICEREL-III; MGC141966;

Gene ID [838](#)

mRNA Refseq [NM_001136109](#)

Protein Refseq [NP_001129581](#)

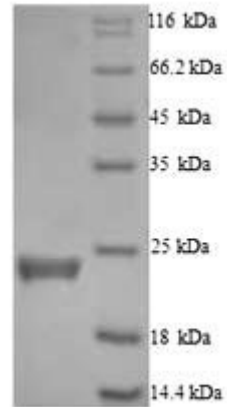
MIM [602665](#)

UniProt ID [P51878](#)

 Tel: 1-631-559-9269 1-516-512-3133

 Email: info@creative-biomart.com  Fax: 1-631-938-8127

 45-1 Ramsey Road, Shirley, NY 11967, USA



(Tris-Glycine gel) Discontinuous SDS-PAGE (reduced) with 5% enrichment gel and 15% separation gel.

 Tel: 1-631-559-9269 1-516-512-3133

 Email: info@creative-biomart.com  Fax: 1-631-938-8127

 45-1 Ramsey Road, Shirley, NY 11967, USA