

## Recombinant Human CASP6 protein(59-222 aa), His-tagged

Cat. No. CASP6-10735H Lot. No. (See product label)

### SPECIFICATION

<b>Product Overview</b>	Recombinant Human CASP6 protein(59-222 aa), fused with His tag, was expressed in E. coli.
<b>Species</b>	Human
<b>Source</b>	E.coli
<b>ProteinLength</b>	59-222 aa
<b>Form</b>	The purified protein was Lyophilized from sterile PBS (58mM Na <sub>2</sub> HPO <sub>4</sub> , 17mM NaH <sub>2</sub> PO <sub>4</sub> , 68mM NaCl, pH7.4). 5 % trehalose and 5 % mannitol are added as protectant before lyophilization. The elution buffer contain 300mM imidazole.
<b>AA Sequence</b>	LTLPERRGTCADRDNLTRRFSDLGFEVKCFNDLKAEEELLKIHEVSTVSHADADCFV CVFLSHGEGNHIYAYDAKIEIQTLTGLFKGDKCHSLVGKPKIFIIQACRGNQHDVPIV LDVVDNQTEKLDTNITEVDAASVYTLPGADFLMCYSVAEGYYSHRET
<b>Purity</b>	85%, by SDS-PAGE with Coomassie Brilliant Blue staining.
<b>Storage</b>	Short-term storage: Store at 2-8°C for (1-2 weeks). Long-term storage: Aliquot and store at -20°C to -80°C for up to 3 months, reconstitution with sterile water and addition of an equal volume of glycerol. Avoid repeat freeze-thaw cycles.
<b>Reconstitution</b>	Reconstitute at 0.25 g/μl in 200 μl sterile water for short-term storage.

 Tel: 1-631-559-9269 1-516-512-3133

 Email: [info@creative-biomart.com](mailto:info@creative-biomart.com)  Fax: 1-631-938-8127

 45-1 Ramsey Road, Shirley, NY 11967, USA

After reconstitution with sterile water, if glycerol has no effect on subsequent experiments, it is recommended to add an equal volume of glycerol for long-term storage.

## GENE INFORMATION

<b>Gene Name</b>	CASP6 caspase 6, apoptosis-related cysteine peptidase [ Homo sapiens ]
<b>Official Symbol</b>	CASP6
<b>Synonyms</b>	CASP6; caspase 6, apoptosis-related cysteine peptidase; caspase 6, apoptosis related cysteine protease; caspase-6; MCH2; apoptotic protease MCH-2; caspase 6, apoptosis-related cysteine protease
<b>Gene ID</b>	839
<b>mRNA Refseq</b>	NM_001226
<b>Protein Refseq</b>	NP_001217
<b>MIM</b>	601532
<b>UniProt ID</b>	P55212

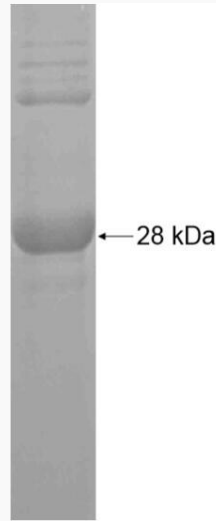
 Tel: 1-631-559-9269 1-516-512-3133

 Email: [info@creative-biomart.com](mailto:info@creative-biomart.com)  Fax: 1-631-938-8127

 45-1 Ramsey Road, Shirley, NY 11967, USA



SDS-PAGE



Tel: 1-631-559-9269 1-516-512-3133

Email: [info@creative-biomart.com](mailto:info@creative-biomart.com) Fax: 1-631-938-8127

45-1 Ramsey Road, Shirley, NY 11967, USA