

Recombinant Human CASP7 Protein, Myc/DDK-tagged, C13 and N15-labeled

Cat. No. CASP7-1605H Lot. No. (See product label)

SPECIFICATION

Product Overview	CASP7 MS Standard C13 and N15-labeled recombinant protein (NP_203124) with a C-terminal MYC/DDK tag, was expressed in HEK293 cells.
Species	Human
Source	HEK293
ProteinLength	1-303 aa
Description	This gene encodes a member of the cysteine-aspartic acid protease (caspase) family. Sequential activation of caspases plays a central role in the execution-phase of cell apoptosis. Caspases exist as inactive proenzymes which undergo proteolytic processing at conserved aspartic residues to produce two subunits, large and small, that dimerize to form the active enzyme. The precursor of the encoded protein is cleaved by caspase 3 and 10, is activated upon cell death stimuli and induces apoptosis. Alternatively spliced transcript variants encoding multiple isoforms have been observed for this gene.
Molecular Mass	37.6 kDa
AA Sequence	MDCVGVWPPGRKWHLEKNTSCGGSSGICASYVTQMADDQGCIEEQGVEDSANEDS VDAKPDRSSFVPSLFSKKNVTMRSIKTTRDRVPTYQYNMNFELGKLCIIINKNFD KVTGMGVRNGTDKDAEALFKCFRSLGFDVIVYNDSCAKMQDLLKKASEEDHTNAA CFACILLSHGEENVYIGKDGVTPIKDLTAHFRGDRCKTLLEKPKLFFIQACRGTELDD

 Tel: 1-631-559-9269 1-516-512-3133

 Email: info@creative-biomart.com  Fax: 1-631-938-8127

 45-1 Ramsey Road, Shirley, NY 11967, USA

GIQADSGPINDTDANPRYKIPVEADFLFAYSTVPGYYSWRSPGRGSWFVQALCSILE
EHGKDLEIMQILTRVNDNRVARHFESQSDDPHFHEKKQIPCVVSMCLKELYFSQTRTR
PLEQKLISEEDLAANDILDYKDDDDKV

Purity > 80% as determined by SDS-PAGE and Coomassie blue staining

Stability Stable for 3 months from receipt of products under proper storage and handling conditions.

Storage Store at -80 centigrade. Avoid repeated freeze-thaw cycles.

Concentration 50 µg/mL as determined by BCA

Storage Buffer 100 mM glycine, 25 mM Tris-HCl, pH 7.3.

GENE INFORMATION

Gene Name CASP7 caspase 7 [Homo sapiens (human)]

Official Symbol CASP7

Synonyms CASP7; caspase 7, apoptosis-related cysteine peptidase; caspase 7, apoptosis related cysteine protease; caspase-7; CMH 1; ICE LAP3; MCH3; CASP-7; Lice2 alpha/beta/gamma; caspase 7 isoform delta; apoptotic protease MCH-3; ICE-like apoptotic protease 3; caspase 7, apoptosis-related cysteine protease; CMH-1; ICE-LAP3;

Gene ID 840

mRNA Refseq NM_033338

 Tel: 1-631-559-9269 1-516-512-3133

 Email: info@creative-biomart.com  Fax: 1-631-938-8127

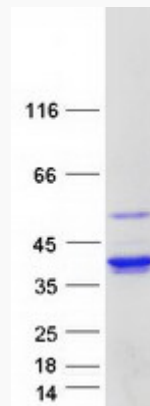
 45-1 Ramsey Road, Shirley, NY 11967, USA

Protein Refseq NP_203124

MIM 601761

UniProt ID P55210

SDS-PAGE



 Tel: 1-631-559-9269 1-516-512-3133

 Email: info@creative-biomart.com  Fax: 1-631-938-8127

 45-1 Ramsey Road, Shirley, NY 11967, USA