

Recombinant Human CASP7 protein, His-tagged

Cat. No. CASP7-7269H Lot. No. (See product label)

SPECIFICATION

Product Overview	Recombinant Human CASP7 protein(P55210-1) (Met 1-Gln 303) was expressed in E.coli, fused with a polyhistidine tag at the C-terminus.
Species	Human
Source	E.coli
ProteinLength	1-303 aa
Form	Lyophilized from sterile 20mM HEPES, 100mM NaCl, 1mM EDTA, 0.10% Sucrose, 0.1% chaps, pH 7.5.
Molecular Mass	The full length of recombinant human CASP7 comprises 313 amino acids and has a calculated molecular mass of 35KDa. As a result of proteolytic cleavage, the apparent molecular mass of the protein is approximately 20 & 11 kDa, corresponding to the N-terminal P20 subunit and the C-terminal p11 subunit respectively in SDS-PAGE under reducing conditions.
Purity	> 90 % as determined by SDS-PAGE
Storage	Store it under sterile conditions at -20°C to -80°C upon receiving. Recommend to aliquot the protein into smaller quantities for optimal storage. Avoid repeated freeze-thaw cycles.
Reconstitution	It is recommended that sterile water be added to the vial to prepare a stock solution of

 Tel: 1-631-559-9269 1-516-512-3133

 Email: info@creative-biomart.com  Fax: 1-631-938-8127

 45-1 Ramsey Road, Shirley, NY 11967, USA

0.2 ug/ul. Centrifuge the vial at 4°C before opening to recover the entire contents.

GENE INFORMATION

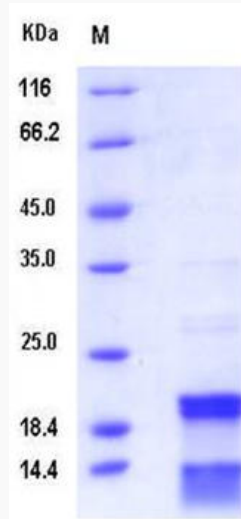
Gene Name	CASP7 caspase 7, apoptosis-related cysteine peptidase [Homo sapiens]
Official Symbol	CASP7
Synonyms	CASP7; caspase 7, apoptosis-related cysteine peptidase; caspase 7, apoptosis related cysteine protease; caspase-7; CMH 1; ICE LAP3; MCH3; CASP-7; Lice2 alpha/beta/gamma; caspase 7 isoform delta; apoptotic protease MCH-3; ICE-like apoptotic protease 3; caspase 7, apoptosis-related cysteine protease; CMH-1; ICE-LAP3;
Gene ID	840
mRNA Refseq	NM_001227
Protein Refseq	NP_001218
MIM	601761
UniProt ID	P55210

 Tel: 1-631-559-9269 1-516-512-3133

 Email: info@creative-biomart.com  Fax: 1-631-938-8127

 45-1 Ramsey Road, Shirley, NY 11967, USA

SDS-PAGE



 Tel: 1-631-559-9269 1-516-512-3133

 Email: info@creative-biomart.com  Fax: 1-631-938-8127

 45-1 Ramsey Road, Shirley, NY 11967, USA