

# Recombinant Human CASP9 Protein (Lys100-Thr270), N-SUMO tagged

Cat. No. CASP9-0855H Lot. No. (See product label)

## SPECIFICATION

<b>Product Overview</b>	Recombinant Human CASP9/Caspase 9 (Lys100-Thr270) fused with the N-SUMO tag was expressed in E. coli.
<b>Species</b>	Human
<b>Source</b>	E.coli
<b>ProteinLength</b>	Lys100-Thr270
<b>Form</b>	Lyophilized powder/frozen liquid
<b>Molecular Mass</b>	31.12 kDa
<b>Purity</b>	>90% as determined by SDS-PAGE.
<b>Notes</b>	For research use only.
<b>Storage</b>	Use a manual defrost freezer and avoid repeated freeze thaw cycles. Store at 2 to 8 centigrade for one week. Store at -20 to -80 centigrade for twelve months from the date of receipt.
<b>Storage Buffer</b>	Lyophilized from PBS, pH 7.4, 0.02% NLS, 1mM EDTA, 4% trehalose, 1% mannitol.
<b>Reconstitution</b>	Reconstitute in sterile water for a stock solution.

 Tel: 1-631-559-9269 1-516-512-3133

 Email: [info@creative-biomart.com](mailto:info@creative-biomart.com)  Fax: 1-631-938-8127

 45-1 Ramsey Road, Shirley, NY 11967, USA

**Shipping** They are shipped out with dry ice/blue ice unless customers require otherwise.

## GENE INFORMATION

**Gene Name** [CASP9 caspase 9, apoptosis-related cysteine peptidase \[ Homo sapiens \(human\) \]](#)

**Official Symbol** [CASP9](#)

**Synonyms** CASP9; caspase 9, apoptosis-related cysteine peptidase; caspase 9, apoptosis related cysteine protease; caspase-9; APAF 3; ICE LAP6; MCH6; PPP1R56; protein phosphatase 1; regulatory subunit 56; apoptotic protease MCH-6; ICE-like apoptotic protease 6; apoptotic protease activating factor 3; protein phosphatase 1, regulatory subunit 56; APAF3; APAF-3; ICE-LAP6; CASPASE-9c;

**Gene ID** [842](#)

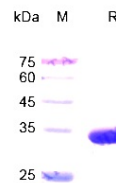
**mRNA Refseq** [NM\\_001229](#)

**Protein Refseq** [NP\\_001220](#)

**MIM** [602234](#)

**UniProt ID** [P55211](#)

### SDS-PAGE



 Tel: 1-631-559-9269 1-516-512-3133

 Email: [info@creative-biomart.com](mailto:info@creative-biomart.com)  Fax: 1-631-938-8127

 45-1 Ramsey Road, Shirley, NY 11967, USA