

Recombinant Human calsequestrin 2 Protein, His tagged

Cat. No. CASQ2-032H Lot. No. (See product label)

SPECIFICATION

Product Overview	Recombinant human CASQ2 protein (O14958) (Glu 20-Glu 399) with a His tag at the C-terminus was expressed in HEK293.
Species	Human
Source	HEK293
ProteinLength	20-399aa
Description	<p>Calsequestrin is a high-capacity, moderate affinity, calcium-binding protein and thus acts as an internal calcium store in muscle. Calcium ions are bound by clusters of acidic residues at the protein surface, especially at the interface between subunits. Can bind around 60 Ca²⁺ ions. Regulates the release of luminal Ca²⁺ via the calcium release channel RYR2; this plays an important role in triggering muscle contraction. Plays a role in excitation-contraction coupling in the heart and in regulating the rate of heart beats.</p>
Tag	C-His
Molecular Mass	44.6 kDa
Endotoxin	Less than 1.0 EU/μg by the LAL method.
Purity	>90% as determined by SDS-PAGE.

 Tel: 1-631-559-9269 1-516-512-3133

 Email: info@creative-biomart.com  Fax: 1-631-938-8127

 45-1 Ramsey Road, Shirley, NY 11967, USA

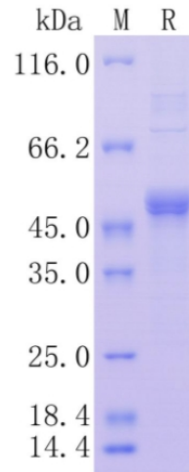
Storage	Please avoid repeated freeze-thaw cycles. Samples are stable for up to twelve months from date of receipt at -20 to -80 centigrade. It is recommended that aliquot the reconstituted solution to minimize freeze-thaw cycles.
Storage Buffer	Lyophilized from a 0.2 µm filtered solution of PBS, pH7.4, 5% Trehalose, 5% mannitol.
Reconstitution	Reconstitute at 250 µg/mL in sterile water.
GENE INFORMATION	
Gene Name	CASQ2 calsequestrin 2 [Homo sapiens (human)]
Official Symbol	CASQ2
Synonyms	CASQ2; calsequestrin 2 (cardiac muscle); calsequestrin-2; PDIB2; calsequestrin, cardiac muscle isoform; calsequestrin 2, fast-twitch, cardiac muscle; FLJ26321; FLJ93514;
Gene ID	845
mRNA Refseq	NM_001232
Protein Refseq	NP_001223
MIM	114251
UniProt ID	O14958

 Tel: 1-631-559-9269 1-516-512-3133

 Email: info@creative-biomart.com  Fax: 1-631-938-8127

 45-1 Ramsey Road, Shirley, NY 11967, USA

**Protein on SDS-
PAGE under
reducing (R)
condition.**



 Tel: 1-631-559-9269 1-516-512-3133

 Email: info@creative-biomart.com  Fax: 1-631-938-8127

 45-1 Ramsey Road, Shirley, NY 11967, USA