

Recombinant Human CASQ2 Protein, GST-Tagged

Cat. No. CASQ2-0436H **Lot. No.** (See product label)

SPECIFICATION

Product Overview Human CASQ2 full-length ORF (AAH22288, 20 a.a. - 399 a.a.) recombinant protein with GST-tag at N-terminal.

Species Human

Source Wheat Germ

Description The protein encoded by this gene specifies the cardiac muscle family member of the calsequestrin family. Calsequestrin is localized to the sarcoplasmic reticulum in cardiac and slow skeletal muscle cells. The protein is a calcium binding protein that stores calcium for muscle function. Mutations in this gene cause stress-induced polymorphic ventricular tachycardia, also referred to as catecholaminergic polymorphic ventricular tachycardia 2 (CPVT2), a disease characterized by bidirectional ventricular tachycardia that may lead to cardiac arrest. [provided by RefSeq, Jul 2008]

Molecular Mass 67.54 kDa

AA Sequence EEGLNFPTYDGKDRVVSLSEKNFKQVLKKYDLLCLYYHEPVSSDKVTQKQFQLKEIV
 LELVAQVLEHKAIGFVMVDAKKEAKLAKKLGFDDEEGSLYILKGDRTIEFDGEFAADV
 VEFLLDLIEDPVEIISSKLEVQAFERIEDYIKLIGFFKSEDSEYYKAFEEAAEHFQPYIKF
 FATFDKGVAKKLSLKMNEVDFYEPFMDEPIAIPNKPYTEEELVEFVKEHQRPTLRRLR
 PEEMFETWEDDLNGIHIVAFAEKSDPDGYEFLEILKQVARDNTDNPDL SILWIDPDDF
 PLLVAYWEKTFKIDLFRPQIGVVNVTADSVWMEIPDDDDLPTAELEDWIEDVLSG

 Tel: 1-631-559-9269 1-516-512-3133

 Email: info@creative-biomart.com  Fax: 1-631-938-8127

 45-1 Ramsey Road, Shirley, NY 11967, USA

KINTEDDDEDDDDDDNSDEEDNDDSDDDDDDE

Applications

Enzyme-linked Immunoabsorbent Assay
 Western Blot (Recombinant protein)
 Antibody Production
 Protein Array

Storage

Store at -80 centigrade. Aliquot to avoid repeated freezing and thawing.

Storage Buffer

50 mM Tris-HCl, 10 mM reduced Glutathione, pH=8.0 in the elution buffer.

GENE INFORMATION

Gene Name

CASQ2 calsequestrin 2 (cardiac muscle) [Homo sapiens]

Official Symbol

CASQ2

Synonyms

CASQ2; calsequestrin 2 (cardiac muscle); calsequestrin-2; PDIB2; calsequestrin, cardiac muscle isoform; calsequestrin 2, fast-twitch, cardiac muscle; FLJ26321; FLJ93514;

Gene ID

845

mRNA Refseq

NM_001232

Protein Refseq

NP_001223

MIM

114251

UniProt ID

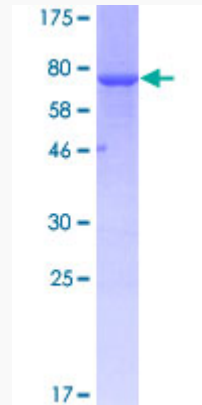
O14958

 Tel: 1-631-559-9269 1-516-512-3133

 Email: info@creative-biomart.com  Fax: 1-631-938-8127

 45-1 Ramsey Road, Shirley, NY 11967, USA

**Quality Control
Testing**



12.5% SDS-PAGE Stained with Coomassie Blue.

 Tel: 1-631-559-9269 1-516-512-3133

 Email: info@creative-biomart.com  Fax: 1-631-938-8127

 45-1 Ramsey Road, Shirley, NY 11967, USA