

Recombinant Human CASR Protein, GST-Tagged

Cat. No. CASR-0439H Lot. No. (See product label)

SPECIFICATION

Product Overview	Human CASR partial ORF (NP_000379, 21 a.a. - 120 a.a.) recombinant protein with GST-tag at N-terminal.
Species	Human
Source	Wheat Germ
Description	<p>The protein encoded by this gene is a G protein-coupled receptor that is expressed in the parathyroid hormone (PTH)-producing chief cells of the parathyroid gland, and the cells lining the kidney tubule. It senses small changes in circulating calcium concentration and couples this information to intracellular signaling pathways that modify PTH secretion or renal cation handling, thus this protein plays an essential role in maintaining mineral ion homeostasis. Mutations in this gene cause familial hypocalciuric hypercalcemia, familial, isolated hypoparathyroidism, and neonatal severe primary hyperparathyroidism. [provided by RefSeq, Jul 2008]</p>
Molecular Mass	36.74 kDa
AA Sequence	GPDQRAQKKGDIILGGLFPIHFGVAAKDQDLKSRPESVEVICIRYNFRGFRWLQAMIFAI EEINSSPALLPNLTLGYRIFDTCNTVSKALEATLSFVAQNKI
Applications	Enzyme-linked Immunoabsorbent Assay Western Blot (Recombinant protein) Antibody Production Protein Array

 Tel: 1-631-559-9269 1-516-512-3133

 Email: info@creative-biomart.com  Fax: 1-631-938-8127

 45-1 Ramsey Road, Shirley, NY 11967, USA

Storage Store at -80 centigrade. Aliquot to avoid repeated freezing and thawing.

Storage Buffer 50 mM Tris-HCl, 10 mM reduced Glutathione, pH=8.0 in the elution buffer.

GENE INFORMATION

Gene Name [CASR calcium-sensing receptor \[Homo sapiens \]](#)

Official Symbol [CASR](#)

Synonyms CASR; calcium-sensing receptor; HHC, HHC1, hypocalciuric hypercalcemia 1; extracellular calcium-sensing receptor; FHH; GPRC2A; NSHPT; severe neonatal hyperparathyroidism; parathyroid Ca(2+)-sensing receptor 1; parathyroid cell calcium-sensing receptor; CAR; FIH; HHC; EIG8; HHC1; PCAR1; MGC138441;

Gene ID [846](#)

mRNA Refseq [NM_000388](#)

Protein Refseq [NP_000379](#)

MIM [601199](#)

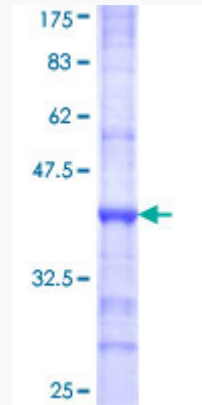
UniProt ID [P41180](#)

 Tel: 1-631-559-9269 1-516-512-3133

 Email: info@creative-biomart.com  Fax: 1-631-938-8127

 45-1 Ramsey Road, Shirley, NY 11967, USA

**Quality Control
Testing**



12.5% SDS-PAGE Stained with Coomassie Blue.

 Tel: 1-631-559-9269 1-516-512-3133

 Email: info@creative-biomart.com  Fax: 1-631-938-8127

 45-1 Ramsey Road, Shirley, NY 11967, USA