

## Recombinant Human CASR Protein (20-612 aa), His-tagged

Cat. No. CASR-1349H Lot. No. (See product label)

### SPECIFICATION

<b>Product Overview</b>	Recombinant Human CASR Protein (20-612 aa) is produced by Yeast expression system. This protein is fused with a 6xHis tag at the N-terminal. Research Area: Metabolism. Protein Description: Partial.
<b>Species</b>	Human
<b>Source</b>	Yeast
<b>ProteinLength</b>	20-612 aa
<b>Description</b>	Senses changes in the Extracellular domain concentration of calcium ions. The activity of this receptor is mediated by a G-protein that activates a phosphatidylinositol-calcium second messenger syst.
<b>Form</b>	Tris-based buffer,50% glycerol
<b>Molecular Mass</b>	68.6 kDa
<b>AA Sequence</b>	YGPDQRAQKKGDIILGGLFPIHFGVAAKDQDLKSRPESVEICIRYNFRGFRWLQAMIF AIEEINSSPALLPNLTLGYRIFDTCNTVSKALEATLSFVAQNKIDSLNLDFCNCSEHIP STIAVVGATGSGVSTAVANLLGLFYIPQVSYASSRLLSNKNQFKSFLRTIPNDEHQA TAMADIIIEYFRWNWVGTTAADDDYGRPGIEKFREEAEERDIDFSELISQYSDEEEIQ HVVEVIQNSTAKVIVVFSSGPDLEPLIKEIVRRNITGKIWLASEAWASSSLIAMPQYFH VVGGTIGFALKAGQIPGFREFLKKVHPRKSVHNGFAKEFEWETFNCHLQEGAKGPL PVDTFLRGHEESGDRFSNSSTAFRPLCTGDENISSVETPYIDYTHLRISYNVYLAVYSI

 Tel: 1-631-559-9269 1-516-512-3133

 Email: [info@creative-biomart.com](mailto:info@creative-biomart.com)  Fax: 1-631-938-8127

 45-1 Ramsey Road, Shirley, NY 11967, USA

AHALQDIYTCLPGRGLFTNGSCADIKKVEAWQVLKHLRHLNFTNNMGEQVTFDECG  
 DLVGNYSIINWHLSPEDGSIVFKEVGYYNVYAKKGERLFINEEKILWSGFSREVPFSN  
 CSRDCLAGTRKGIIEGEPTCCFECVECPDGEYSDETASACNKCPDDFWSNENHTS  
 CIAKEIEFLSWTEPF

**Purity** > 90% as determined by SDS-PAGE.

**Notes** Repeated freezing and thawing is not recommended. Store working aliquots at 4 centigrade for up to one week.

**Storage** The shelf life is related to many factors, storage state, buffer ingredients, storage temperature and the stability of the protein itself. Generally, the shelf life of liquid form is 6 months at -20 centigrade/-80 centigrade. The shelf life of lyophilized form is 12 months at -20 centigrade/-80 centigrade.

**Concentration** A hardcopy of COA with reconstitution instruction is sent along with the products. Please refer to it for detailed information.

## GENE INFORMATION

**Gene Name** [CASR calcium-sensing receptor \[ Homo sapiens \]](#)

**Official Symbol** [CASR](#)

**Synonyms** CASR; FHH; GPRC2A; NSHPT; CAR; FIH; HHC; EIG8; HHC1; PCAR1; MGC138441;

**Gene ID** [846](#)

**mRNA Refseq** [NM\\_000388](#)

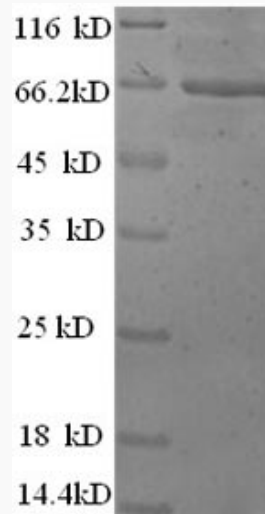
 Tel: 1-631-559-9269 1-516-512-3133

 Email: [info@creative-biomart.com](mailto:info@creative-biomart.com)  Fax: 1-631-938-8127

 45-1 Ramsey Road, Shirley, NY 11967, USA

Protein Refseq NP\_000379

UniProt ID P41180



(Tris-Glycine gel) Discontinuous SDS-PAGE (reduced) with 5% enrichment gel and 15% separation gel.

Tel: 1-631-559-9269 1-516-512-3133

Email: [info@creative-biomart.com](mailto:info@creative-biomart.com) Fax: 1-631-938-8127

45-1 Ramsey Road, Shirley, NY 11967, USA