

Recombinant Human CASR Protein, His tagged

Cat. No. CASR-49H Lot. No. (See product label)

SPECIFICATION

| | |
|-------------------------|---------------------------------------------------------------------------------------------------------------------------------------------------------------------------------------------------------------------------------------------------------------------------------------------------------------------------------------------------------------------------------------------------------------------------------------------------------------------------------------------------------------------------------------------------|
| Product Overview | Recombinant Human CASR Protein with His tag was expressed in E. coli. |
| Species | Human |
| Source | E.coli |
| Description | The protein encoded by this gene is a plasma membrane G protein-coupled receptor that senses small changes in circulating calcium concentration. The encoded protein couples this information to intracellular signaling pathways that modify parathyroid hormone secretion or renal cation handling, and thus this protein plays an essential role in maintaining mineral ion homeostasis. Mutations in this gene are a cause of familial hypocalciuric hypercalcemia, neonatal severe hyperparathyroidism, and autosomal dominant hypocalcemia. |
| Molecular Mass | The protein has a calculated MW of 67 kDa. |
| AA Sequence | <p>MGSSHHHHHHSSGLVPRGSHMYGPDQRAQKKGDIILGGLFPIHFGVAAKDQDLKSR PESVECIRYNFRGFRWLQAMIFAIEEINSSPALLPNLTLGYRIFDTCNTVSKALEATLS FVAQNKIDSLNLDFCNCSEHIPSTIAVVGATGSGVSTAVANLLGLFYIPQVSYASSS RLLSNKNQFKSFLRTIPNDEHQATAMADIIEYFRWNWVGTTAADDDYGRPGIEKFRE EAEERDIDFSELISQYSDEEEIQHVVEVIQNSTAKVIVVFSSGPDLEPLIKEIVRRNIT GKIWLASEAWASSSLIAMPQYFHVVGTTIGFALKAGQIPGFREFLKKVHPRKSVHNG FAKEFWEETFNCHLQEGAKGPLPVDTFLRGHEESGDRFSNSSTAFRPLCTGDENIS SVETPYIDYTHLRISYINVYLAVYSIAHALQDIYTCLPGRGLFTNGSCADIKKVEAWQVL</p> |

 Tel: 1-631-559-9269 1-516-512-3133

 Email: info@creative-biomart.com  Fax: 1-631-938-8127

 45-1 Ramsey Road, Shirley, NY 11967, USA

KHLRHLNFTNNMGEQVTFDECGDLVGNYSIINWHLSPEDGSIVFKEVGYYNVYAKK
 GERLFINEEKILWSGFSREVPPFSNCSRDCLAGTRKGIIEGEPTCCFECVECPDGEYS
 DETDASACNKCPDDFWSNENHTSCIAK

Purity > 95% by SDS-PAGE

Storage Store it under sterile conditions at -20 to -80 centigrade. It is recommended that the protein be aliquoted for optimal storage. Avoid repeated freeze-thaw cycles.

Concentration 0.62 mg/mL

Storage Buffer Sterile 20 mM Tris, 100 mM NaCl, 5 mM EDTA, pH 8.0

GENE INFORMATION

Gene Name [CASR calcium-sensing receptor \[Homo sapiens \]](#)

Official Symbol [CASR](#)

Synonyms CASR; calcium-sensing receptor; HHC, HHC1, hypocalciuric hypercalcemia 1; extracellular calcium-sensing receptor; FHH; GPRC2A; NSHPT; severe neonatal hyperparathyroidism; parathyroid Ca(2+)-sensing receptor 1; parathyroid cell calcium-sensing receptor; CAR; FIH; HHC; EIG8; HHC1; PCAR1; MGC138441;

Gene ID [846](#)

mRNA Refseq [NM_000388](#)

Protein Refseq [NP_000379](#)

MIM 601199

 Tel: 1-631-559-9269 1-516-512-3133

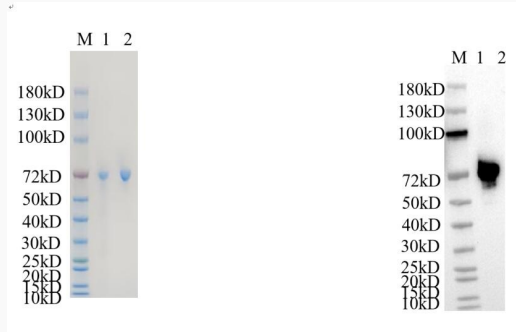
 Email: info@creative-biomart.com  Fax: 1-631-938-8127

 45-1 Ramsey Road, Shirley, NY 11967, USA

UniProt ID

P41180

Reducing 12% SDS-PAGE (CBB stained) and WB (Anti-His Mouse Monoclonal Antibody) analysis profile of purified CASR



1. CASR
2. BSA

 Tel: 1-631-559-9269 1-516-512-3133

 Email: info@creative-biomart.com  Fax: 1-631-938-8127

 45-1 Ramsey Road, Shirley, NY 11967, USA