

Recombinant Human CAST Protein, GST-Tagged

Cat. No. CAST-0441H Lot. No. (See product label)

SPECIFICATION

Product Overview	Human CAST full-length ORF (NP_775083.1, 1 a.a. - 686 a.a.) recombinant protein with GST-tag at N-terminal.
Species	Human
Source	Wheat Germ
Description	The protein encoded by this gene is an endogenous calpain (calcium-dependent cysteine protease) inhibitor. It consists of an N-terminal domain L and four repetitive calpain-inhibition domains (domains 1-4), and it is involved in the proteolysis of amyloid precursor protein. The calpain/calpastatin system is involved in numerous membrane fusion events, such as neural vesicle exocytosis and platelet and red-cell aggregation. The encoded protein is also thought to affect the expression levels of genes encoding structural or regulatory proteins. Alternatively spliced transcript variants encoding different isoforms have been described. [provided by RefSeq, Jun 2010]
Molecular Mass	100.5 kDa
AA Sequence	MNPTETKAVKTEPEKKSQSTKLSVVHEKKSQEGKPKHEHTEPKSLPKQASDTGSNDA HNKKAVSRSAEQQPSEKSTEPKTKPQDMISAGGESVAGITAISGKPGDKKKEKSLT PAVPVESKPKPSGKSGMDAALDDLIDTLGGPEETEEENTTYTGPEVSDPMSSTYIE ELGKREVTIPPKYRELLAKKEGITGPPADSSKPIGPDDAIDALSSDFTCGSPTAAGKK TEKEESTEVLKAQSAGTVRSAAPPQEKKRKVEKDTMSDQALEALSASLGTRQAEPE

 Tel: 1-631-559-9269 1-516-512-3133

 Email: info@creative-biomart.com  Fax: 1-631-938-8127

 45-1 Ramsey Road, Shirley, NY 11967, USA

LDLRSIKEVDEAKAKEEKLEKCGEDDETIPSEYRLKPATDKDGKPLLPEPEEKPKPRS
 ESELIDELSEDFDRSECKEKPSKPTEKTEESKAAAPAPVSEAVCRTSMCSIQSAPPE
 PATLKGTVPDDAVEALADSLGKKEADPEDGKPVMDKVKEKAKEEDREKLGEKEETI
 PPDYRLEEIVKDKDGKPLLPKESKEQLPPMSEDFLLDALSEDFSGPQNASSLKFEDA
 KLA AAISEVVSQTPASTTQAGAPPRDTSQSDKDLDDALDKLSDSLGQRQPD DENK
 PMEDKVKEKAKAEHRDKLGERDDTIPPEYRHLLDDNGQDKPVKPPTKKSEDSKKPA
 DDQDPIDALSGDL DSCPSTTETSQNTAKDKCKKAASSSKAPKNGGKAKDSAKTTEE
 TSKPKDD

Applications

Enzyme-linked Immunoabsorbent Assay
 Western Blot (Recombinant protein)
 Antibody Production
 Protein Array

Storage

Store at -80 centigrade. Aliquot to avoid repeated freezing and thawing.

Storage Buffer

50 mM Tris-HCl, 10 mM reduced Glutathione, pH=8.0 in the elution buffer.

GENE INFORMATION

Gene Name

CAST [calpastatin \[Homo sapiens \]](#)

Official Symbol

CAST

Synonyms

CAST; calpastatin; calpain inhibitor; sperm BS-17 component; BS-17; MGC9402;

Gene ID

831

mRNA Refseq

[NM_001042440](#)

Protein Refseq

[NP_001035905](#)

 Tel: 1-631-559-9269 1-516-512-3133

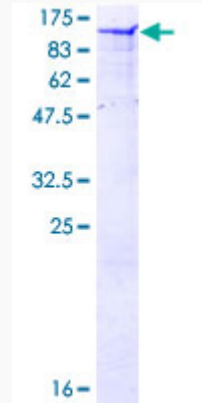
 Email: info@creative-biomart.com  Fax: 1-631-938-8127

 45-1 Ramsey Road, Shirley, NY 11967, USA

MIM 114090

UniProt ID P20810

**Quality Control
Testing**



12.5% SDS-PAGE Stained with Coomassie Blue.

 Tel: 1-631-559-9269 1-516-512-3133

 Email: info@creative-biomart.com  Fax: 1-631-938-8127

 45-1 Ramsey Road, Shirley, NY 11967, USA