

Recombinant Human CAST Protein, Myc/DDK-tagged, C13 and N15-labeled

Cat. No. CAST-1363H **Lot. No.** (See product label)

SPECIFICATION

Product Overview	CAST MS Standard C13 and N15-labeled recombinant protein (NP_001741) with a C-terminal MYC/DDK tag, was expressed in HEK293 cells.
Species	Human
Source	HEK293
Description	The protein encoded by this gene is an endogenous calpain (calcium-dependent cysteine protease) inhibitor. It consists of an N-terminal domain L and four repetitive calpain-inhibition domains (domains 1-4), and it is involved in the proteolysis of amyloid precursor protein. The calpain/calpastatin system is involved in numerous membrane fusion events, such as neural vesicle exocytosis and platelet and red-cell aggregation. The encoded protein is also thought to affect the expression levels of genes encoding structural or regulatory proteins. Alternatively spliced transcript variants encoding different isoforms have been described.
Molecular Mass	84.8 kDa
AA Sequence	MSQPGQKPAASPRPRRAAAARRTHEHVSEKTSESPSKPGEKKGSDKKAASLGSS QSSRTYAGGTASATKVSASSGATSKSSSMNPTETKAIPVSQQMEGPHLPNKKKHKK QAVKTEPEKKSQSTKLSVVHEKKSQEGKPKHEHTEPKSLPKQASDTGSNDAHNNKAV SRSAEQQPSEKSTEPKTKPQDMISAGGESVAGITAISGKPGDKKKEKKS LTPAVPVE SKPDKPSGKSGMDAALDDLIDTLGGPEETEEENTTYTGPEVSDPMSSTYIEELGKRE

 Tel: 1-631-559-9269 1-516-512-3133

 Email: info@creative-biomart.com  Fax: 1-631-938-8127

 45-1 Ramsey Road, Shirley, NY 11967, USA

VTIPPKYRELLAKKEGITGPPADSSKPIGPDDAIDALSSDFTCGSPTAAGKKTEKEEST
 EVLKAQSSGTVRSAPPQEKRRKVEKDTMSDQALEALSASLGTRQAEPELDLRSIKE
 VDEAKAKEEKLEKCGEDDETIPSEYRLKPATDKDGKPLLPEPEEKPKPRSESELIDEL
 SEDFDRSECKEKPSKPTKTEESKAAAPAPVSEAVCRTSMCSIQSAPPEPATLKGTV
 PDDAVEALADSLGKKEADPEDGKPVMDKVKEKAKEEDREKLGEKEETIPPDYRLEE
 VKDKDGKPLLPKESKEQLPPMSEDFLLDALSEDFSGPQNASSLKFEDAKLAAAISEV
 VSQTPASTTQAGAPPRDTSQSDKDLDDALDKLSDSLGQRQPDNDENKPMEDKVKE
 KAKAEHRDKLGERDDTIPPEYRHLLDDNGQDKPVKPPTKKSEDSKPKADDQDPIDA
 LSGDLDCPSTTETSQNTAKDKCKKAASSSKAPKNGGKAKDSAKTTEETSKPKDDT
 RTRPLEQKLISEEDLAANDILDYKDDDDKV

Purity > 80% as determined by SDS-PAGE and Coomassie blue staining

Stability Stable for 3 months from receipt of products under proper storage and handling conditions.

Storage Store at -80 centigrade. Avoid repeated freeze-thaw cycles.

Concentration 50 µg/mL as determined by BCA

Storage Buffer 100 mM glycine, 25 mM Tris-HCl, pH 7.3.

GENE INFORMATION

Gene Name CAST calpastatin [Homo sapiens (human)]

Official Symbol CAST

Synonyms CAST; calpastatin; calpain inhibitor; sperm BS-17 component; BS-17; MGC9402;

Gene ID 831

 Tel: 1-631-559-9269 1-516-512-3133

 Email: info@creative-biomart.com  Fax: 1-631-938-8127

 45-1 Ramsey Road, Shirley, NY 11967, USA

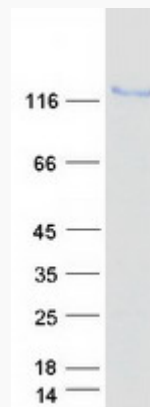
mRNA Refseq [NM_001750](#)

Protein Refseq [NP_001741](#)

MIM [114090](#)

UniProt ID [P20810](#)

SDS-PAGE



 Tel: 1-631-559-9269 1-516-512-3133

 Email: info@creative-biomart.com  Fax: 1-631-938-8127

 45-1 Ramsey Road, Shirley, NY 11967, USA