

Recombinant Human CAST Protein, His&GST-tagged

Cat. No. CAST-628H **Lot. No.** (See product label)

SPECIFICATION

Product Overview	Recombinant Human CAST Protein (Ala446-Lys636) with His&GST tag was expressed in E. coli.
Species	Human
Source	E.coli
ProteinLength	Ala446-Lys636
Description	The protein encoded by this gene is an endogenous calpain (calcium-dependent cysteine protease) inhibitor. It consists of an N-terminal domain L and four repetitive calpain-inhibition domains (domains 1-4), and it is involved in the proteolysis of amyloid precursor protein. The calpain/calpastatin system is involved in numerous membrane fusion events, such as neural vesicle exocytosis and platelet and red-cell aggregation. The encoded protein is also thought to affect the expression levels of genes encoding structural or regulatory proteins. Alternatively spliced transcript variants encoding different isoforms have been described.
Form	Freeze-dried powder
Molecular Mass	Predicted Molecular Mass: 51.3 kDa; Accurate Molecular Mass: 58 kDa
Purity	> 80%
Applications	Positive Control; Immunogen; SDS-PAGE; WB.

 Tel: 1-631-559-9269 1-516-512-3133

 Email: info@creative-biomart.com  Fax: 1-631-938-8127

 45-1 Ramsey Road, Shirley, NY 11967, USA

Stability	The thermal stability is described by the loss rate. The loss rate was determined by accelerated thermal degradation test, that is, incubate the protein at 37 centigrade for 48h, and no obvious degradation and precipitation were observed. The loss rate is less than 5% within the expiration date under appropriate storage condition.
Storage	Avoid repeated freeze/thaw cycles. Store at 2-8 centigrade for one month. Aliquot and store at -80 centigrade for 12 months.
Storage Buffer	20mM Tris, 150mM NaCl, pH8.0, containing 1mM EDTA, 1mM DTT, 0.01% SKL, 5% Trehalose and Proclin300.
Reconstitution	Reconstitute in 20mM Tris, 150mM NaCl (pH8.0) to a concentration of 0.1-1.0 mg/mL. Do not vortex.

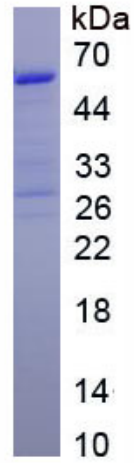
GENE INFORMATION

Gene Name	CAST calpastatin [Homo sapiens (human)]
Official Symbol	CAST
Synonyms	CAST; calpastatin; calpain inhibitor; sperm BS-17 component; BS-17; MGC9402;
Gene ID	831
mRNA Refseq	NM_001042440
Protein Refseq	NP_001035905
MIM	114090
UniProt ID	P20810

 Tel: 1-631-559-9269 1-516-512-3133

 Email: info@creative-biomart.com  Fax: 1-631-938-8127

 45-1 Ramsey Road, Shirley, NY 11967, USA



Tel: 1-631-559-9269 1-516-512-3133

Email: info@creative-biomart.com Fax: 1-631-938-8127

45-1 Ramsey Road, Shirley, NY 11967, USA