

Recombinant Human CATSPER1 Protein, GST-Tagged

Cat. No. CATSPER1-0445H Lot. No. (See product label)

SPECIFICATION

Product Overview Human CATSPER1 full-length ORF (AAH36522.1, 1 a.a. - 780 a.a.) recombinant protein with GST-tag at N-terminal.

Species Human

Source Wheat Germ

Description Calcium ions play a primary role in the regulation of sperm motility. This gene belongs to a family of putative cation channels that are specific to spermatozoa and localize to the flagellum. The protein family features a single repeat with six membrane-spanning segments and a predicted calcium-selective pore region. [provided by RefSeq, Jul 2008]

Molecular Mass 116.5 kDa

AA Sequence MDQNSVPEKAQNEADTNNADRFFRSHSSPPHHRPGHSRALHHYELHHHGVPHQ
GESHPPEFQDFHDQALSSHVHQSHHHSEARNHGRAHGPTGFGLAPSQGAVPSH
RSYGEDYHDELQRDGRRHHDGSQYGGFHQQSDSHYHRGSHHGRPQYLGENLSH
YSSGVPHHGEASHHGGSYLPHPNPYSESFHHSEASHLSGLQHDESQHHQVPHR
GWPHHHQVHHHGRSRHHEAHQHKGKSPHHGETISPHSSVGSYQRGISDYHSEYHQ
GDHHPSEYHHGDHPHHTQHYYHQTHRHRDYHQHQDHHGAYHSSYLHGDYVQST
SQLSIPHTSRSLIHDAPGPAASRTGVFPYHVAHPRGSAHSMTRSSSTIRSRVTQMSK
KVHTQDISTKHSEDWGKEEGQFQKRKTGRLQRTRKKGHSTNLFQWLWEKLTFLIQ
GFREMIRNLTQSLAFETFIFFVCLNTVMLVAQTFAEVEIRGEWYFMALDSIFFCIYV

 Tel: 1-631-559-9269 1-516-512-3133

 Email: info@creative-biomart.com  Fax: 1-631-938-8127

 45-1 Ramsey Road, Shirley, NY 11967, USA

EALLKIIALGLSYFFDFWNNLDFIMAMAVLDFLLMQTHSFAYIHQSLFRILKVFKSLRA
 LRAIRVLRRLSFLTQVETGTLGQSLPSIAAILMFTCLFLFSAVLRALFRKSDPKRF
 QNIFTTIFTLFTLLTLDDWSLIYMDSRAQGWYIIPILIIYIIIQYFIFLNLVITVLVDSFQTA
 LFKGLEKAKQERAARIQEKLLDSLTELRAAEPKEVASEGTMKRLIEKKFGTMTTEKQ
 QELLFHYLQLVASVEQEQQKFRSQAAVIDEIVDTTFEAGEEDFRN

Applications
 Enzyme-linked Immunoabsorbent Assay
 Western Blot (Recombinant protein)
 Antibody Production
 Protein Array

Storage Store at -80 centigrade. Aliquot to avoid repeated freezing and thawing.

Storage Buffer 50 mM Tris-HCl, 10 mM reduced Glutathione, pH=8.0 in the elution buffer.

GENE INFORMATION

Gene Name CATSPER1 cation channel, sperm associated 1 [Homo sapiens]

Official Symbol CATSPER1

Synonyms CATSPER1; cation channel, sperm associated 1; cation channel sperm-associated protein 1; CATSPER; hCatSper; sperm ion channel; sperm-associated cation channel 1; SPGF7; MGC33335; MGC33368;

Gene ID 117144

mRNA Refseq NM_053054

Protein Refseq NP_444282

 Tel: 1-631-559-9269 1-516-512-3133

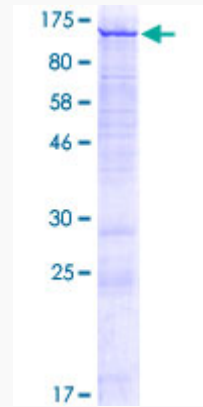
 Email: info@creative-biomart.com  Fax: 1-631-938-8127

 45-1 Ramsey Road, Shirley, NY 11967, USA

MIM 606389

UniProt ID Q8NEC5

**Quality Control
Testing**



12.5% SDS-PAGE Stained with Coomassie Blue.

 Tel: 1-631-559-9269 1-516-512-3133

 Email: info@creative-biomart.com  Fax: 1-631-938-8127

 45-1 Ramsey Road, Shirley, NY 11967, USA