

# Recombinant Human CATSPER1 protein(1-445aa), His-tagged

Cat. No. CATSPER1-6543H Lot. No. (See product label)

## SPECIFICATION

<b>Product Overview</b>	Recombinant Human CATSPER1 protein(Q8NEC5)(1-445aa), fused with C-terminal His tag, was expressed in Yeast.
<b>Species</b>	Human
<b>Source</b>	Yeast
<b>ProteinLength</b>	1-445aa
<b>Form</b>	If the delivery form is liquid, the default storage buffer is Tris/PBS-based buffer, 5%-50% glycerol. If the delivery form is lyophilized powder, the buffer before lyophilization is Tris/PBS-based buffer, 6% Trehalose, pH 8.0.
<b>Molecular Mass</b>	52.7 kDa
<b>Purity</b>	Greater than 85% as determined by SDS-PAGE.
<b>Storage</b>	Store at -20°C/-80°C upon receipt, aliquoting is necessary for mutiple use. Avoid repeated freeze-thaw cycles.
<b>Reconstitution</b>	We recommend that this vial be briefly centrifuged prior to opening to bring the contents to the bottom. Please reconstitute protein in deionized sterile water to a concentration of 0.1-1.0 mg/mL. We recommend to add 5-50% of glycerol (final concentration) and aliquot for long-term storage at -20°C/-80°C.

 Tel: 1-631-559-9269 1-516-512-3133

 Email: [info@creative-biomart.com](mailto:info@creative-biomart.com)  Fax: 1-631-938-8127

 45-1 Ramsey Road, Shirley, NY 11967, USA

**AA Sequence**

MDQNSVPEKAQNEADTNNADRFFRSHSSPPHHRPGHSRALHHYELHHHGVPHQ  
 GESHPPEFQDFHDQALSSHVHQSHHHSEARNHGRAHGPTGFGLAPSQGA  
 VPSHRSYGEDYHDELQRDGRRRHHDGSQYGGFHQQSDSHYHRGSHHGR  
 PQYLGENLSHYSSGVPHHGEASHHGGSYLPHGPNPYSESFHHSEASHLS  
 GLQHDESQHHQVPHRGWPHHHQVHHHGRSRHHEAHQHGKSPHHGETIS  
 PHSSVGSYQRGISDYHSEYHQGDHHPSEYHHGDHPHHTQHYYHQTH  
 RHRDYHQHQDHHGAYHSSYLHG DYVQSTSQLSIPHTSRSLIHDAPG  
 PAASRTGVFPYHVAHPRGSAHSMTRSSSTIRSRVTQMSK  
 KVHTQDISTKHS EDWGKEEGQFQKRKTGRLQRTRKKGHSTNLFQWL  
 WEKLTFLIQGFREMIRNLTQ

## GENE INFORMATION

**Gene Name** [CATSPER1 cation channel, sperm associated 1 \[ Homo sapiens \]](#)

**Official Symbol** [CATSPER1](#)

**Synonyms** CATSPER1; cation channel, sperm associated 1; cation channel sperm-associated protein 1; CATSPER; hCatSper; sperm ion channel; sperm-associated cation channel 1; SPGF7; MGC33335; MGC33368;

**Gene ID** [117144](#)

**mRNA Refseq** [NM\\_053054](#)

**Protein Refseq** [NP\\_444282](#)

**MIM** [606389](#)

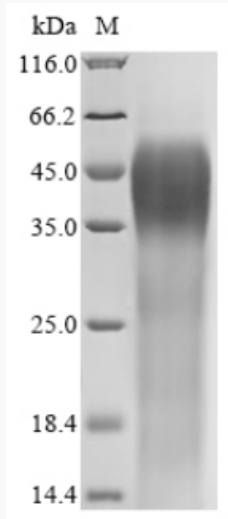
**UniProt ID** [Q8NEC5](#)

 Tel: 1-631-559-9269 1-516-512-3133

 Email: [info@creative-biomart.com](mailto:info@creative-biomart.com)  Fax: 1-631-938-8127

 45-1 Ramsey Road, Shirley, NY 11967, USA

**SDS-PAGE**



 Tel: 1-631-559-9269 1-516-512-3133

 Email: [info@creative-biomart.com](mailto:info@creative-biomart.com)  Fax: 1-631-938-8127

 45-1 Ramsey Road, Shirley, NY 11967, USA