

# Recombinant Full Length Human CAV3 Protein, C-Flag-tagged

Cat. No. CAV3-1327HFL Lot. No. (See product label)

## SPECIFICATION

<b>Product Overview</b>	Recombinant Full Length Human CAV3 Protein, fused to Flag-tag at C-terminus, was expressed in Mammalian cells.
<b>Species</b>	Human
<b>Source</b>	Mammalian Cells
<b>Description</b>	This gene encodes a caveolin family member, which functions as a component of the caveolae plasma membranes found in most cell types. Caveolin proteins are proposed to be scaffolding proteins for organizing and concentrating certain caveolin-interacting molecules. Mutations identified in this gene lead to interference with protein oligomerization or intra-cellular routing, disrupting caveolae formation and resulting in Limb-Girdle muscular dystrophy type-1C (LGMD-1C), hyperCKemia or rippling muscle disease (RMD). Alternative splicing has been identified for this locus, with inclusion or exclusion of a differentially spliced intron. In addition, transcripts utilize multiple polyA sites and contain two potential translation initiation sites.
<b>Form</b>	25 mM Tris HCl, pH 7.3, 100 mM glycine, 10% glycerol.
<b>Molecular Mass</b>	17.1 kDa
<b>AA Sequence</b>	MMAEEHTDLEAQIVKDIHCKEIDLVNRDPKNINEDIVKVD FEDVIAEPVGTYSFDGWV KVSYTTFVSKY WCYRLLSTLLGVPLALLWGFLFACISFCHIWA VVPCIKSYLIEIQCI SHIYSLCIRTF CNPLFAALGQVC SSIKVVLRKEVTRTRPLEQKLISEEDLAANDILDYKDDDDKV

 Tel: 1-631-559-9269 1-516-512-3133

 Email: [info@creative-biomart.com](mailto:info@creative-biomart.com)  Fax: 1-631-938-8127

 45-1 Ramsey Road, Shirley, NY 11967, USA

<b>Purity</b>	> 80% as determined by SDS-PAGE and Coomassie blue staining.
<b>Stability</b>	Stable for 12 months from the date of receipt of the product under proper storage and handling conditions. Avoid repeated freeze-thaw cycles.
<b>Storage</b>	Store at -80 centigrade.
<b>Concentration</b>	>50 ug/mL as determined by microplate BCA method.
<b>Preparation</b>	Recombinant protein was captured through anti-DDK affinity column followed by conventional chromatography steps.
<b>Protein Families</b>	Druggable Genome, Transmembrane
<b>Protein Pathways</b>	Focal adhesion
<b>Full Length</b>	Full L.

## GENE INFORMATION

<b>Gene Name</b>	<a href="#">CAV3 caveolin 3 [ Homo sapiens (human) ]</a>
<b>Official Symbol</b>	<a href="#">CAV3</a>
<b>Synonyms</b>	LQT9; MPDT; RMD2; VIP21; LGMD1C; VIP-21
<b>Gene ID</b>	<a href="#">859</a>
<b>mRNA Refseq</b>	<a href="#">NM_033337.3</a>
<b>Protein Refseq</b>	<a href="#">NP_203123.1</a>

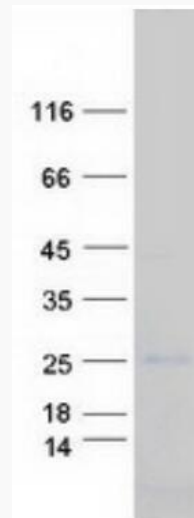
 Tel: 1-631-559-9269 1-516-512-3133

 Email: [info@creative-biomart.com](mailto:info@creative-biomart.com)  Fax: 1-631-938-8127

 45-1 Ramsey Road, Shirley, NY 11967, USA

**MIM** 601253

**UniProt ID** P56539



Coomassie blue staining of purified CAV3 protein.

 Tel: 1-631-559-9269 1-516-512-3133

 Email: [info@creative-biomart.com](mailto:info@creative-biomart.com)  Fax: 1-631-938-8127

 45-1 Ramsey Road, Shirley, NY 11967, USA