

Recombinant Human CFBF protein, Trx-His-SUMO-tagged

Cat. No. CBFB-1147H Lot. No. (See product label)

SPECIFICATION

Product Overview	Recombinant Human CFBF protein(Q13951-2)(411aa), fused with three tags, Trx, His and SUMO tag, was expressed in E. coli.
Species	Human
Source	E.coli
Protein Length	411aa(including fusion tag)
Tag	Trx-His-SUMO
Form	1XPBS.
Molecular Mass	46.9kDa(including fusion tag)
Storage	Store at -80°C and avoid repeated freeze-thaw cycles.
Reconstitution	It is recommended that sterile water be added to the vial to prepare a stock solution of 0.2 ug/ul. Centrifuge the vial at 4°C before opening to recover the entire contents.

GENE INFORMATION

Gene Name	CBFB core-binding factor, beta subunit [Homo sapiens]
Official Symbol	CBFB

 Tel: 1-631-559-9269 1-516-512-3133

 Email: info@creative-biomart.com  Fax: 1-631-938-8127

 45-1 Ramsey Road, Shirley, NY 11967, USA

Synonyms CBFB; core-binding factor, beta subunit; core-binding factor subunit beta; PEBP2B; CBF-beta; PEA2-beta; PEBP2-beta; SL3-3 enhancer factor 1 beta subunit; SL3-3 enhancer factor 1 subunit beta; SL3/AKV core-binding factor beta subunit; polyomavirus enhancer-binding protein 2 beta subunit; polyomavirus enhancer binding protein 2, beta subunit;

Gene ID [865](#)

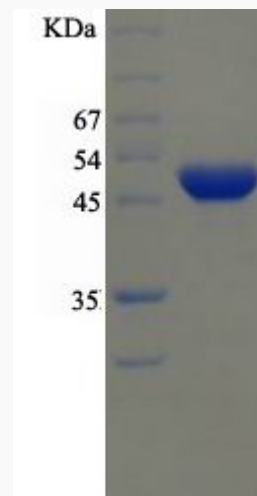
mRNA Refseq [NM_001755](#)

Protein Refseq [NP_001746](#)

MIM [121360](#)

UniProt ID [Q13951](#)

SDS-PAGE



 Tel: 1-631-559-9269 1-516-512-3133

 Email: info@creative-biomart.com  Fax: 1-631-938-8127

 45-1 Ramsey Road, Shirley, NY 11967, USA