

Recombinant Human Cbl proto oncogene Protein, His tagged

Cat. No. CBL-001H Lot. No. (See product label)

SPECIFICATION

| | |
|-------------------------|---|
| Product Overview | Recombinant Human CBL Protein with His tag was expressed in E. coli. |
| Species | Human |
| Source | E.coli |
| ProteinLength | 775-906 aa |
| Description | <p>This gene is a proto-oncogene that encodes a RING finger E3 ubiquitin ligase. The encoded protein is one of the enzymes required for targeting substrates for degradation by the proteasome. This protein mediates the transfer of ubiquitin from ubiquitin conjugating enzymes (E2) to specific substrates. This protein also contains an N-terminal phosphotyrosine binding domain that allows it to interact with numerous tyrosine-phosphorylated substrates and target them for proteasome degradation. As such it functions as a negative regulator of many signal transduction pathways. This gene has been found to be mutated or translocated in many cancers including acute myeloid leukaemia, and expansion of CGG repeats in the 5' UTR has been associated with Jacobsen syndrome. Mutations in this gene are also the cause of Noonan syndrome-like disorder.</p> |
| Tag | C-His |
| Molecular Mass | 15 kDa |
| AA Sequence | MDVPKPPVPAVLARRTLSDISNASSSFGWLSLDGDPTTNVTEGSQVPERPPKPFPR |

 Tel: 1-631-559-9269 1-516-512-3133

 Email: info@creative-biomart.com  Fax: 1-631-938-8127

 45-1 Ramsey Road, Shirley, NY 11967, USA

RINSERKAGSCQQGSGPAASAATASPQLSSEIENLMSQGYSYQDIQKALVIAQNNIE
MAKNILREFVSISSPAHVATHHHHHHHH

Endotoxin < 1 EU/μg by LAL

Purity > 90% by SDS-PAGE

Storage Store it under sterile conditions at -20 to -80 centigrade. It is recommended that the protein be aliquoted for optimal storage. Avoid repeated freeze-thaw cycles.

Storage Buffer Sterile PBS, pH8.3

Concentration 1 mg/mL by BCA

GENE INFORMATION

Gene Name CBL Cbl proto-oncogene [Homo sapiens (human)]

Official Symbol CBL

Synonyms CBL; Cbl proto-oncogene, E3 ubiquitin protein ligase; Cas Br M (murine) ecotropic retroviral transforming sequence, CBL2; E3 ubiquitin-protein ligase CBL; c Cbl; oncogene CBL2; RNF55; proto-oncogene c-Cbl; RING finger protein 55; signal transduction protein CBL; casitas B-lineage lymphoma proto-oncogene; Cas-Br-M (murine) ecotropic retroviral transforming sequence; CBL2; NSLL; C-CBL

Gene ID 867

mRNA Refseq NM_005188

Protein Refseq NP_005179

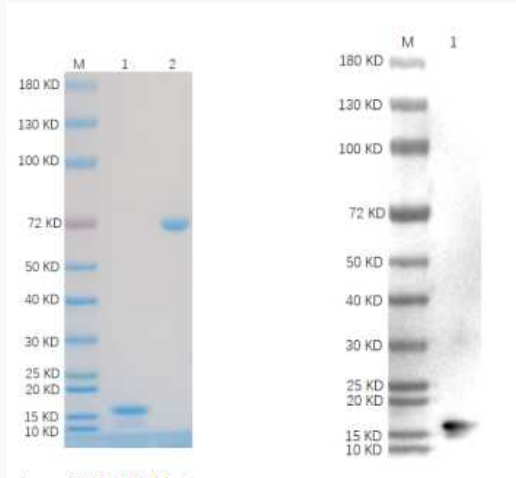
 Tel: 1-631-559-9269 1-516-512-3133

 Email: info@creative-biomart.com  Fax: 1-631-938-8127

 45-1 Ramsey Road, Shirley, NY 11967, USA

MIM 165360**UniProt ID** P22681

**Reducing 4%-20%
SDS-PAGE (CBB
stained) and WB
(Anti-His Mouse
Monoclonal
antibody) analysis
profiles of purified
CBL.**



1. CBL: 1 μ g
2. BSA: 1 μ g

 Tel: 1-631-559-9269 1-516-512-3133 Email: info@creative-biomart.com  Fax: 1-631-938-8127 45-1 Ramsey Road, Shirley, NY 11967, USA