

## Recombinant Human CBL Protein, GST-Tagged

Cat. No. CBL-0457H Lot. No. (See product label)

### SPECIFICATION

**Product Overview** Human CBL full-length ORF (NP\_005179.2, 1 a.a. - 906 a.a.) recombinant protein with GST-tag at N-terminal.

**Species** Human

**Source** Wheat Germ

**Description** This gene is a proto-oncogene that encodes a RING finger E3 ubiquitin ligase. The encoded protein is one of the enzymes required for targeting substrates for degradation by the proteasome. This protein mediates the transfer of ubiquitin from ubiquitin conjugating enzymes (E2) to specific substrates. This protein also contains an N-terminal phosphotyrosine binding domain that allows it to interact with numerous tyrosine-phosphorylated substrates and target them for proteasome degradation. As such it functions as a negative regulator of many signal transduction pathways. This gene has been found to be mutated or translocated in many cancers including acute myeloid leukaemia, and expansion of CGG repeats in the 5' UTR has been associated with Jacobsen syndrome. Mutations in this gene are also the cause of Noonan syndrome-like disorder. [provided by RefSeq, Jul 2016]

**Molecular Mass** 126 kDa

**AA Sequence** MAGNVKKSSGAGGGSGSGGSGSGLIGLMKDAFQPHHHHHHLSPPHPPGTVDKK  
MVEKVCWKLMDKVVRLCQNPKLALKNSPPYILDLLPDTYQHLRILTILSRYEKMETLGE  
NEYFRVFMENLMKKTQKQISLKFKEGKERMYEENSQPRRNLTKLSLIFSHMLAELKGIF

 Tel: 1-631-559-9269 1-516-512-3133

 Email: [info@creative-biomart.com](mailto:info@creative-biomart.com)  Fax: 1-631-938-8127

 45-1 Ramsey Road, Shirley, NY 11967, USA

PSGLFQGDTFRITKADAAEFWRKAFGEKTIVPWKSFRQALHEVHPISSGLEAMALKS  
 TIDLCNDYISVFEFDIFTRLFQPWSSLLRNWNSLAVTHPGYMAFLTYDEVKARLQKF  
 IHKPGSYIFRLSCTRLGQWAIGYVTADGNILQTIPH NKPLFQALIDGFREGFYLPDGR  
 NQNPDLTGLCEPTPQDHIKVTQEYELYCEMGSTFQLCKICAENDKDVKIEPCGHLM  
 CTSCLTSWQESEGQGCPCFCRCEIKGTEPIVVDPFDPRGSGSLLRQGAEGAPSPNYD  
 DDDDERADDTLFMMKELAGAKVERPPSPFSMAPQASLPPVPPRLDLLPQRVCVPSS  
 ASALGTASKAASGSLHKDKPLPVPPTLRDLPPPPPPDRPYSVGAESRPQRRPLPCT  
 PGDCPSRDKLPPVPSSRLGDSWLPRPIPKVPVSAPSSSDPWTGRELTNRHSLPFSL  
 PSQMEPRPDVPRLGSTFSLDTSMSMNSSPLVGPECDHPKIKPSSSANAIYSLAARPL  
 PVPKLPPEGEQCEGEEDTEYMT PSSRPLRPLDTSQSSRACDCDQQIDSCTYEAMYNI  
 QSQAPSITESSTFGEGNLAAAHANTGPEESENEDDGYDVPKPPVPAVLARRTLSDIS  
 NASSSFGWLSLDGDPTTNVTEGSQVPERPPKPFRRINSERKAGSCQQGSGPAAS  
 AATASPQLSSEIENLMSQGYSYQDIQKALVIAQNNIEMAKNILREFVSISSPAHVAT

**Applications**  
 Enzyme-linked Immunoabsorbent Assay  
 Western Blot (Recombinant protein)  
 Antibody Production  
 Protein Array

**Storage** Store at -80 centigrade. Aliquot to avoid repeated freezing and thawing.

**Storage Buffer** 50 mM Tris-HCl, 10 mM reduced Glutathione, pH=8.0 in the elution buffer.

## GENE INFORMATION

**Gene Name** CBL Cbl proto-oncogene, E3 ubiquitin protein ligase [ Homo sapiens ]

**Official Symbol** CBL

**Synonyms** CBL; Cbl proto-oncogene, E3 ubiquitin protein ligase; Cas Br M (murine) ecotropic

 Tel: 1-631-559-9269 1-516-512-3133

 Email: [info@creative-biomart.com](mailto:info@creative-biomart.com)  Fax: 1-631-938-8127

 45-1 Ramsey Road, Shirley, NY 11967, USA

retroviral transforming sequence, CBL2; E3 ubiquitin-protein ligase CBL; c Cbl; oncogene CBL2; RNF55; proto-oncogene c-Cbl; RING finger protein 55; signal transduction protein CBL; casitas B-lineage lymphoma proto-oncogene; Cas-Br-M (murine) ecotropic retroviral transforming sequence; CBL2; NSLL; C-CBL;

**Gene ID** 867

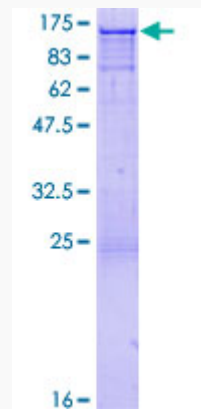
**mRNA Refseq** [NM\\_005188](#)

**Protein Refseq** [NP\\_005179](#)

**MIM** 165360

**UniProt ID** [P22681](#)

**Quality Control Testing**



12.5% SDS-PAGE Stained with Coomassie Blue.

 Tel: 1-631-559-9269 1-516-512-3133

 Email: [info@creative-biomart.com](mailto:info@creative-biomart.com)  Fax: 1-631-938-8127

 45-1 Ramsey Road, Shirley, NY 11967, USA