

# Recombinant Full Length Human CBL Protein, C-Flag-tagged

Cat. No. CBL-808HFL Lot. No. (See product label)

## SPECIFICATION

|                         |   |
|-------------------------|---|
| <b>Product Overview</b> | Recombinant Full Length Human CBL Protein, fused to Flag-tag at C-terminus, was expressed in Mammalian cells.   |
| <b>Species</b>          | Human   |
| <b>Source</b>           | Mammalian Cells   |
| <b>Description</b>      | <p>This gene is a proto-oncogene that encodes a RING finger E3 ubiquitin ligase. The encoded protein is one of the enzymes required for targeting substrates for degradation by the proteasome. This protein mediates the transfer of ubiquitin from ubiquitin conjugating enzymes (E2) to specific substrates. This protein also contains an N-terminal phosphotyrosine binding domain that allows it to interact with numerous tyrosine-phosphorylated substrates and target them for proteasome degradation. As such it functions as a negative regulator of many signal transduction pathways. This gene has been found to be mutated or translocated in many cancers including acute myeloid leukaemia, and expansion of CGG repeats in the 5' UTR has been associated with Jacobsen syndrome. Mutations in this gene are also the cause of Noonan syndrome-like disorder.</p> |
| <b>Form</b>             | 25 mM Tris HCl, pH 7.3, 100 mM glycine, 10% glycerol.   |
| <b>Molecular Mass</b>   | 99.5 kDa  |
| <b>AA Sequence</b>      | MAGNVKKSSGAGGGSGSGGGSGSGGLIGLMKDAFQPHHHHHHHLSPHPPGTVDKK<br>MVEKCVKLMKVVRLC QNPKLALKNSPPYILDLLPDTYQHLRRTILSRYEGKMETLG  |

 Tel: 1-631-559-9269 1-516-512-3133

 Email: [info@creative-biomart.com](mailto:info@creative-biomart.com)  Fax: 1-631-938-8127

 45-1 Ramsey Road, Shirley, NY 11967, USA

ENEYFRVFMENLMKKTQKQISLKFKEGKERM YEENSQPRRNLTKLSLIFSHMLAELKG  
 IFPSGLFQGDTRITKADAAEFWRKAFGEKTIVPWKSFRQALH EVHPISSGLEAMAL  
 KSTIDLTCNDYISVFEDIFTRLFQPWSSLLRNWNSLAVTHPGYMAFLTYDEVKAR L  
 QKFIHKPGSYIFRLSCTRLGQWAIGYVTADGNILQTIPHNKPLFQALIDGFREGFYLP  
 DGRNQNPDLT GLCEPTQDHIKVTQEYELYCEMGSTFQLCKICAENDKDVKIEPC  
 GHLMCTSWQSESEGQGCPCFCR CEIKGTEPIVDPFDPRGSGSLLRQGAEGAP  
 SPNYDDDDDERADDTLMMKELAGAKVERPPSPFMAPQ ASLPPVPPRLDLLPQR  
 VCVPSASALGTASKAASGSLHKDKPLVPPTLRDLPPPPPPDRPYSVGAESRP QR  
 RPLPCTPGDCPSRDKLPPVPSSRLGDSWLPRPIPKVPVSAPSSSDPWTGRELTNRH  
 SLPFSLPSQMEP RPDVPRLGSTFSLDTSMSMNSSPLVGPEDHPIKIPSSSANAIY  
 SLAARPLVPKLPPGEQCEGEEDTEY MTPSSRPLRPLDTSQSSRACDCDQQIDSCT  
 YEAMYNISQAPSITESSTFGEGNLAAHANTGPEESENE DDGYDVPKPPVPAVLA  
 RRTLSDISNASSSFGWLSLDGDPTTNVTEGSQVPERPPKPFPRRINSERKAGSC QQ  
 GSGPAASAATASPQLSSEIENLMSQGYQDIQKALVIAQNNIEMAKNILREFVSISSP  
 AHVATTRTRPLEQKLISEEDLAANDILDYKDDDDKV

**Purity** > 80% as determined by SDS-PAGE and Coomassie blue staining.

**Stability** Stable for 12 months from the date of receipt of the product under proper storage and handling conditions. Avoid repeated freeze-thaw cycles.

**Storage** Store at -80 centigrade.

**Concentration** >50 ug/mL as determined by microplate BCA method.

**Preparation** Recombinant protein was captured through anti-DDK affinity column followed by conventional chromatography steps.

**Protein Families** Druggable Genome, Transcription Factors

 Tel: 1-631-559-9269 1-516-512-3133

 Email: [info@creative-biomart.com](mailto:info@creative-biomart.com)  Fax: 1-631-938-8127

 45-1 Ramsey Road, Shirley, NY 11967, USA

**Protein Pathways**      Chronic myeloid leukemia, Endocytosis, ErbB signaling pathway, Insulin signaling pathway, Jak-STAT signaling pathway, Pathways in cancer, T cell receptor signaling pathway, Ubiquitin mediated proteolysis

**Full Length**      Full L.

## GENE INFORMATION

**Gene Name**      [CBL Cbl proto-oncogene \[ Homo sapiens \(human\) \]](#)

**Official Symbol**      [CBL](#)

**Synonyms**      CBL2; NSLL; C-CBL; RNF55; FRA11B

**Gene ID**      [867](#)

**mRNA Refseq**      [NM\\_005188.4](#)

**Protein Refseq**      [NP\\_005179.2](#)

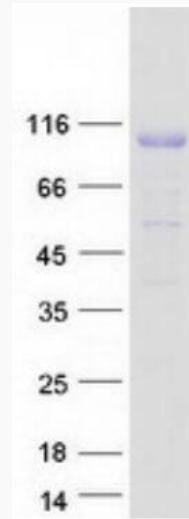
**MIM**      [165360](#)

**UniProt ID**      [P22681](#)

 Tel: 1-631-559-9269    1-516-512-3133

 Email: [info@creative-biomart.com](mailto:info@creative-biomart.com)     Fax: 1-631-938-8127

 45-1 Ramsey Road, Shirley, NY 11967, USA



Coomassie blue staining of purified CBL protein.

 Tel: 1-631-559-9269 1-516-512-3133

 Email: [info@creative-biomart.com](mailto:info@creative-biomart.com)  Fax: 1-631-938-8127

 45-1 Ramsey Road, Shirley, NY 11967, USA