

Recombinant Human CBLB protein, His-tagged

Cat. No. CBLB-733H **Lot. No.** (See product label)

SPECIFICATION

Product Overview	Recombinant Human CBLB (Ala39-Phe426) protein was fused to His-tag at N-terminus and expressed in E.coli.
Species	Human
Source	E.coli
ProteinLength	Ala39-Phe426
Description	Casitas B-lineage lymphoma proto-oncogene b (CBLB) is also known as RNF56. E3 ubiquitin-protein ligase which accepts ubiquitin from specific E2 ubiquitin-conjugating enzymes, and transfers it to substrates, generally promoting their degradation by the proteasome. Negatively regulates TCR (T-cell receptor), BCR (B-cell receptor) and FCER1 (high affinity immunoglobulin epsilon receptor) signal transduction pathways. Slightly promotes SRC ubiquitination. May be involved in EGFR ubiquitination and internalization. May be functionally coupled with the E2 ubiquitin-protein ligase UB2D3. Expressed in placenta, heart, lung, kidney, spleen, ovary and testis, as well as fetal brain and liver and hematopoietic cell lines, but not in adult brain, liver, pancreas, salivary gland, or skeletal muscle.
Predicted N Terminal	Ala39
Form	Lyophilized from 0.22 µm filtered solution in 40 mM HEPES, 120 mM NaCl, pH7.5, 10% trehalose.

 Tel: 1-631-559-9269 1-516-512-3133

 Email: info@creative-biomart.com  Fax: 1-631-938-8127

 45-1 Ramsey Road, Shirley, NY 11967, USA

Molecular Mass	The protein has a calculated MW of 47.0 kDa. The protein migrates as 46 kDa under reducing (R) condition (SDS-PAGE) due to glycosylation.
Endotoxin	Less than 1.0 EU per µg by the LAL method.
Purity	>95% as determined by SDS-PAGE.
Storage	For long term storage, the product should be stored at lyophilized state at -20 centigrade or lower. Please avoid repeated freeze-thaw cycles. This product is stable after storage at: -20 to -70 centigrade for 12 months in lyophilized state; -70 centigrade for 3 months under sterile conditions after reconstitution.
Reconstitution	It is recommended that sterile water be added to the vial to prepare a stock solution of 0.2 ug/ul. Centrifuge the vial at 4°C before opening to recover the entire contents.

GENE INFORMATION

Gene Name	CBLB
Official Symbol	CBLB
Synonyms	CBLB; Cbl proto-oncogene, E3 ubiquitin protein ligase B; Cas Br M (murine) ecotropic retroviral transforming sequence b , Cas Br M (murine) ectropic retroviral transforming sequence b; E3 ubiquitin-protein ligase CBL-B; Cbl b; RNF56; RING finger protein 56; SH3-binding protein CBL-B; signal transduction protein CBL-B; casitas B-lineage lymphoma proto-oncogene b; Cas-Br-M (murine) ectropic retroviral transforming sequence b; Cas-Br-M (murine) ecotropic retroviral transforming sequence b; Cbl-b; Nbla00127; FLJ36865; FLJ41152; DKFZp779A0729; DKFZp779F1443;

 Tel: 1-631-559-9269 1-516-512-3133

 Email: info@creative-biomart.com  Fax: 1-631-938-8127

 45-1 Ramsey Road, Shirley, NY 11967, USA

DKFZp686J10223

Gene ID 868

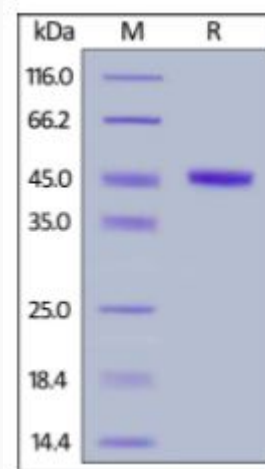
mRNA Refseq NM_170662

Protein Refseq NP_733762

MIM 604491

UniProt ID Q13191

SDS-PAGE of CBLB-733H



Human CBLB, His Tag on SDS-PAGE under reducing (R) condition. The gel was stained overnight with Coomassie Blue. The purity of the protein is greater than 95%.

 Tel: 1-631-559-9269 1-516-512-3133

 Email: info@creative-biomart.com  Fax: 1-631-938-8127

 45-1 Ramsey Road, Shirley, NY 11967, USA