

Recombinant Human CBLN1 Protein (Gln22-Leu193), N-His tagged

Cat. No. CBLN1-0996H Lot. No. (See product label)

SPECIFICATION

Product Overview	Recombinant Human CBLN1 (Gln22-Leu193) fused with the N-His tag was expressed in E. coli.
Species	Human
Source	E.coli
ProteinLength	Gln22-Leu193
Form	Lyophilized powder/frozen liquid
Molecular Mass	21.30 kDa
Purity	>90% as determined by SDS-PAGE.
Notes	For research use only.
Storage	Use a manual defrost freezer and avoid repeated freeze thaw cycles. Store at 2 to 8 centigrade for one week. Store at -20 to -80 centigrade for twelve months from the date of receipt.
Storage Buffer	0.01M PBS, pH 7.4, 0.02% NLS
Reconstitution	Reconstitute in sterile water for a stock solution.

 Tel: 1-631-559-9269 1-516-512-3133

 Email: info@creative-biomart.com  Fax: 1-631-938-8127

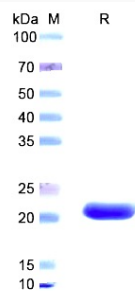
 45-1 Ramsey Road, Shirley, NY 11967, USA

Shipping

They are shipped out with dry ice/blue ice unless customers require otherwise.

GENE INFORMATION

Gene Name	CBLN1 cerebellin 1 precursor [Homo sapiens (human)]
Official Symbol	CBLN1
Synonyms	CBLN1; cerebellin 1 precursor; cerebellin-1; precerebellin;
Gene ID	869
mRNA Refseq	NM_004352
Protein Refseq	NP_004343
MIM	600432
UniProt ID	P23435

SDS-PAGE


 Tel: 1-631-559-9269 1-516-512-3133

 Email: info@creative-biomart.com  Fax: 1-631-938-8127

 45-1 Ramsey Road, Shirley, NY 11967, USA