

Recombinant Mouse CBLN2 Protein, His tagged

Cat. No. CBLN2-2783M Lot. No. (See product label)

SPECIFICATION

Product Overview	Recombinant Mouse CBLN2 Protein with His tag was expressed in HEK293.
Species	Mouse
Source	HEK293
ProteinLength	52-225 aa
Description	The protein encoded by this gene belongs to a family of secreted neuronal glycoproteins. The transcript is broadly expressed in the embryonic and adult brain with higher levels in some regions including the olfactory bulb, thalamus, and cerebral cortex. The protein can bind to presynaptic neuexins and induce synaptogenesis in cultured neurons. Null mutant mice are viable, fertile and do not display obvious neuroanatomical defects. Alternative splicing results in multiple transcript variants.
AASequence	QNDTEPIVLEGKCLVVCDSSPSGDGAVTSSLGISVRSGSAKVAFSATRSTNHEPSEM SNRTMTIYFDQVLVGNIGNHFDLASSIFVAPRKGIYSFSFHVVKVYNRQTIQVSLMQNG YPVISAFAGDQDVTREASNGVLLLMEREDKVHLKLERGNLMGGWKYSTFSGFLVF PLDYKDDDDKHHHHHHHH
Molecular Mass	21 kDa
Endotoxin	< 1 EU/μg by LAL.
Purity	> 80% by SDS-PAGE

 Tel: 1-631-559-9269 1-516-512-3133

 Email: info@creative-biomart.com  Fax: 1-631-938-8127

 45-1 Ramsey Road, Shirley, NY 11967, USA

Storage	Store it under sterile conditions at -20 to -80 centigrade. It is recommended that the protein be aliquoted for optimal storage. Avoid repeated freeze-thaw cycles.
Storage Buffer	Sterile PBS, pH7.4
Concentration	2.56 mg/mL by BCA

GENE INFORMATION

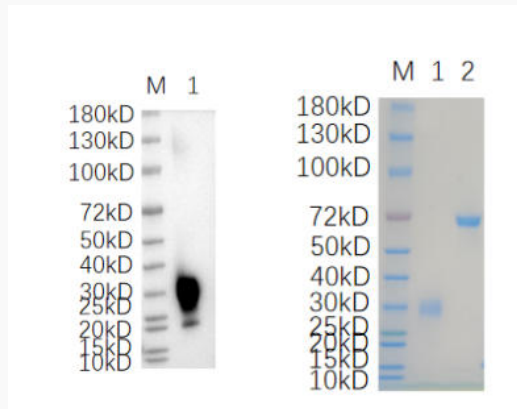
Gene Name	Cbln2 cerebellin 2 precursor protein [Mus musculus (house mouse)]
Official Symbol	CBLN2
Synonyms	Cbln2; cerebellin 2 precursor protein; A730004O05; 6330593N19Rik; cerebellin-2
Gene ID	12405
mRNA Refseq	NM_172633
Protein Refseq	NP_766221
UniProt ID	Q8BGU2

 Tel: 1-631-559-9269 1-516-512-3133

 Email: info@creative-biomart.com  Fax: 1-631-938-8127

 45-1 Ramsey Road, Shirley, NY 11967, USA

SDS-PAGE and WB



1.CBLN2-2783M 1ug 2.BSA 1ug Reducing 4%-20% SDS-PAGE (CBB stained) and WB (Anti-His Mouse Monoclonal antibody) analysis profiles of purified CBLN2-2783M

 Tel: 1-631-559-9269 1-516-512-3133

 Email: info@creative-biomart.com  Fax: 1-631-938-8127

 45-1 Ramsey Road, Shirley, NY 11967, USA