

Recombinant Human CBLN4 Protein, GST-Tagged

Cat. No. CBLN4-0466H Lot. No. (See product label)

SPECIFICATION

Product Overview	Human CBLN4 full-length ORF (NP_542184.1, 1 a.a. - 201 a.a.) recombinant protein with GST-tag at N-terminal.
Species	Human
Source	Wheat Germ
Description	This gene encodes a member of a family of small secreted proteins containing C1Q domains. Members of this family are involved in regulation of neurexin signalling during synapse development. The mouse homolog of the protein encoded by this gene competes with netrin to bind to the deleted in colorectal cancer receptor. [provided by RefSeq, Aug 2012]
Molecular Mass	48.2 kDa
AA Sequence	MGSGRRALSAVPAVLLVLTLPGLPVWAQNDTEPIVLEGKCLVVCDSNPATDSKGSS SSPLGISVRAANSKVAFAVRSTNHEPSEMSNKTRIIYFDQILVNVGNFFTLESVFVA PRKGIYSFSFHVIKVVYQSQTIQVNLMLNGKPVISAFAGDKDVTREAAATNGVLLYLDKE DKVYLKLEKGNLVGGWQYSTFSGFLVFPL
Applications	Enzyme-linked Immunoabsorbent Assay Western Blot (Recombinant protein) Antibody Production Protein Array

 Tel: 1-631-559-9269 1-516-512-3133

 Email: info@creative-biomart.com  Fax: 1-631-938-8127

 45-1 Ramsey Road, Shirley, NY 11967, USA

Storage Store at -80 centigrade. Aliquot to avoid repeated freezing and thawing.

Storage Buffer 50 mM Tris-HCl, 10 mM reduced Glutathione, pH=8.0 in the elution buffer.

GENE INFORMATION

Gene Name CBLN4 cerebellin 4 precursor [Homo sapiens]

Official Symbol CBLN4

Synonyms CBLN4; cerebellin 4 precursor; CBLNL1, cerebellin precursor like 1; cerebellin-4; dJ885A10.1; cerebellin precursor-like 1; cerebellin-like glycoprotein 1; CBLNL1;

Gene ID 140689

mRNA Refseq NM_080617

Protein Refseq NP_542184

MIM 615029

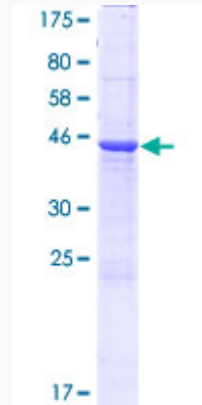
UniProt ID Q9NTU7

 Tel: 1-631-559-9269 1-516-512-3133

 Email: info@creative-biomart.com  Fax: 1-631-938-8127

 45-1 Ramsey Road, Shirley, NY 11967, USA

**Quality Control
Testing**



12.5% SDS-PAGE Stained with Coomassie Blue.

 Tel: 1-631-559-9269 1-516-512-3133

 Email: info@creative-biomart.com  Fax: 1-631-938-8127

 45-1 Ramsey Road, Shirley, NY 11967, USA