

## Recombinant Human CBR1 Protein (2-277 aa), His-tagged

Cat. No. CBR1-1351H Lot. No. (See product label)

### SPECIFICATION

<b>Product Overview</b>	Recombinant Human CBR1 Protein (2-277 aa) is produced by Yeast expression system. This protein is fused with a 6xHis tag at the N-terminal. Research Area: Metabolism. Protein Description: Full Length of Mature Protein.
<b>Species</b>	Human
<b>Source</b>	Yeast
<b>ProteinLength</b>	2-277 aa
<b>Description</b>	NADPH-dependent reductase with broad substrate specificity. Catalyzes the reduction of a wide variety of carbonyl compounds including quinones, prostaglandins, menadione, plus various xenobiotics. Catalyzes the reduction of the antitumor anthracyclines doxorubicin and daunorubicin to the cardiotoxic compounds doxorubicinol and daunorubicinol. Can convert prostaglandin E2 to prostaglandin F2-alpha. Can bind glutathione, which explains its higher affinity for glutathione-conjugated substrates. Catalyzes the reduction of S-nitrosoglutathione.
<b>Form</b>	Tris-based buffer,50% glycerol
<b>Molecular Mass</b>	32.2 kDa
<b>AA Sequence</b>	SSGIHVALVTGGNKGIGLAIVRDLCLFSGDVVLTARDVTRGQAAVQQQLQAEGLSPR FHQLDIDDLQSIKALRDFLRKEYGGDLVNNAGIAFKVADPTPFHIQAEVTMKTNFF GTRDVCTELLPLIKPQGRVNVSSIMSVRALKSCSPELQQKFRSETITEEELVGLMKNK

 Tel: 1-631-559-9269 1-516-512-3133

 Email: [info@creative-biomart.com](mailto:info@creative-biomart.com)  Fax: 1-631-938-8127

 45-1 Ramsey Road, Shirley, NY 11967, USA

FVEDTKKGVHQKEGWPSSAYGVTKIGVTVLSRIHARKLSEQRKGDKILLNACCPGW  
VRTDMAGPKATKSPEEGAETPVYLALLPPDAEGPHGQFVSEKRVEQW

**Purity** > 90% as determined by SDS-PAGE.

**Notes** Repeated freezing and thawing is not recommended. Store working aliquots at 4 centigrade for up to one week.

**Storage** The shelf life is related to many factors, storage state, buffer ingredients, storage temperature and the stability of the protein itself. Generally, the shelf life of liquid form is 6 months at -20 centigrade/-80 centigrade. The shelf life of lyophilized form is 12 months at -20 centigrade/-80 centigrade.

**Concentration** A hardcopy of COA with reconstitution instruction is sent along with the products. Please refer to it for detailed information.

## GENE INFORMATION

**Gene Name** [CBR1 carbonyl reductase 1 \[ Homo sapiens \]](#)

**Official Symbol** [CBR1](#)

**Synonyms** CBR1; CBR; SDR21C1; hCBR1;

**Gene ID** [873](#)

**mRNA Refseq** [NM\\_001757](#)

**Protein Refseq** [NP\\_001748](#)

**MIM** [114830](#)

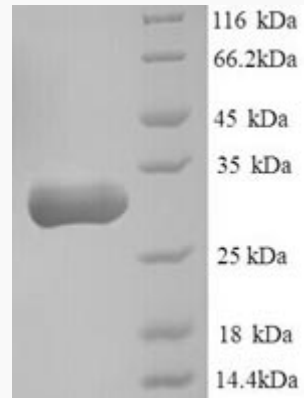
 Tel: 1-631-559-9269 1-516-512-3133

 Email: [info@creative-biomart.com](mailto:info@creative-biomart.com)  Fax: 1-631-938-8127

 45-1 Ramsey Road, Shirley, NY 11967, USA

UniProt ID

P16152



(Tris-Glycine gel) Discontinuous SDS-PAGE (reduced) with 5% enrichment gel and 15% separation gel.

 Tel: 1-631-559-9269 1-516-512-3133

 Email: [info@creative-biomart.com](mailto:info@creative-biomart.com)  Fax: 1-631-938-8127

 45-1 Ramsey Road, Shirley, NY 11967, USA