

# Recombinant Human Carbonyl Reductase 1

**Cat. No.** CBR1-142H    **Lot. No.** (See product label)

## SPECIFICATION

<b>Product Overview</b>	Recombinant human CBR1 protein was expressed in E.coli and purified by using conventional chromatography, 30 kDa (277aa).
<b>Species</b>	Human
<b>Source</b>	E.coli
<b>Description</b>	CBR1(Carbonyl reductase 1) is one of several monomeric <b>NADPH-dependent oxidoreductases</b> having wide specificity for carbonyl compounds. CBR1 is widely distributed in human tissues. CBR1 metabolizes many toxic environmental <b>quinones</b> and pharmacological relevant substrates such as the anticancer <b>doxorubicin</b> . CBR1 can also convert prostaglandin E2 to prostaglandin F2-alpha.
<b>Sequences of amino acids</b>	MSSGIHVALV TGGNKGIGLA IVRDLCRLFS GDVVLTDV TRGQAAVQQL QAEGLSRPFH QLDIDDLQSI RALRDFLRKE YGGLDVLVNN AGIAFKVADP TPFHIQAEVT MKTNFFGTRD VCTELLPLIK PQGRVNVSS IMSVRALKSC SPELQQKFRS ETITEEELVG LMNKFVEDTK KGVHQKEGWP SSAYGVTKIG VTVLSRIHAR KLSEQRKGDK ILLNACCPGW VRTDMAGPKA TKSPEEGAET PVYLALLPPD AEGPHGQFVS EKRVEQW
<b>Purity</b>	> 95% by SDS - PAGE
<b>Form</b>	Liquid. In 20 mM Tris-HCl buffer (pH 8.5) containing 10% glycerol
<b>Concentration</b>	1 mg/ml (determined by Bradford assay)

 Tel: 1-631-559-9269    1-516-512-3133

 Email: [info@creative-biomart.com](mailto:info@creative-biomart.com)     Fax: 1-631-938-8127

 45-1 Ramsey Road, Shirley, NY 11967, USA

**Storage** Can be stored at +4°C short term (1-2 weeks). For long term storage, aliquot and store at -20°C or -70°C. Avoid repeated freezing and thawing cycles.

## GENE INFORMATION

**Gene Name** [CBR1 carbonyl reductase 1 \[ Homo sapiens \]](#)

**Synonyms** CBR1; CBR; hCBR1; SDR21C1; CBR1; CRN; carbonyl reductase (NADPH) 1, EC 1.1.1.184; carbonyl reductase 1; carbonyl reductase (NADPH) 1; prostaglandin 9-ketoreductase; prostaglandin-E(2) 9-reductase; short chain dehydrogenase/reductase family 21C, member 1; EC 1.1.1.184; EC 1.1.1.189; EC 1.1.1.197; NADPH-dependent carbonyl reductase 1; 15-hydroxyprostaglandin dehydrogenase [NADP+].

**Gene ID** [873](#)

**mRNA Refseq** [NM\\_001757](#)

**Protein Refseq** [NP\\_001748](#)

**MIM** [114830](#)

**UniProt ID** [P16152](#)

**Chromosome Location** 21q22.13

**Pathway** Arachidonic acid metabolism

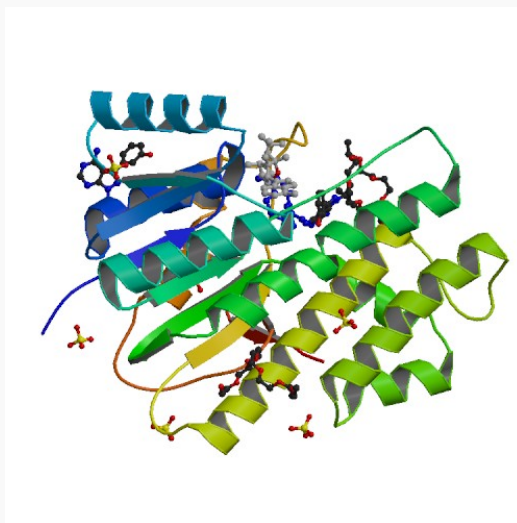
**Function** 15-hydroxyprostaglandin dehydrogenase (NADP+) activity; carbonyl reductase (NADPH) activity; oxidoreductase activity; prostaglandin-E2 9-reductase activity; protein binding

 Tel: 1-631-559-9269 1-516-512-3133

 Email: [info@creative-biomart.com](mailto:info@creative-biomart.com)  Fax: 1-631-938-8127

 45-1 Ramsey Road, Shirley, NY 11967, USA

PDBrendering based  
on 1wma. Available  
structures:1wma



 Tel: 1-631-559-9269 1-516-512-3133

 Email: [info@creative-biomart.com](mailto:info@creative-biomart.com)  Fax: 1-631-938-8127

 45-1 Ramsey Road, Shirley, NY 11967, USA