

## Recombinant Human CBS Protein, GST-Tagged

Cat. No. CBS-0471H Lot. No. (See product label)

### SPECIFICATION

**Product Overview** Human CBS full-length ORF (AAH11381.1, 1 a.a. - 551 a.a.) recombinant protein with GST-tag at N-terminal.

**Species** Human

**Source** Wheat Germ

**Description** The protein encoded by this gene acts as a homotetramer to catalyze the conversion of homocysteine to cystathionine, the first step in the transsulfuration pathway. The encoded protein is allosterically activated by adenosyl-methionine and uses pyridoxal phosphate as a cofactor. Defects in this gene can cause cystathionine beta-synthase deficiency (CBS), which can lead to homocystinuria. This gene is a major contributor to cellular hydrogen sulfide production. Multiple alternatively spliced transcript variants have been found for this gene. [provided by RefSeq, Feb 2016]

**Molecular Mass** 86.35 kDa

**AA Sequence**

```

MPSETPQAEVGPTGCPHRSGPHSAKGSLEKGSPEDEKEAKEPLWIRPDAPSRCTWQ
LGRPASESPHHHTAPAKSPKILPDILKIGDTPMVRINKIGKKFGLKCELLAKCEFFNA
GGSVKDRISLRMIEDAERDGLKPGDTIIEPTSGNTGIGLALAAAVRGYRCIIVMPEKM
SSEKVDVLRALGAEIVRTPNARFDSPEHVGVAVWRLKNEIPNSHILDQYRNASNPL
AHYDTTAEILQQCDGKLDMLVASVGTGGTITGIARKLKEKCPGCRIIGVDPEGSILA
EPEELNQTEQTTYEVEGIGYDFIPTVLDRTVVDKWFKSNDEEAFTFARMLIAQEGLLC
GGGAGSTVAVAVKAAQELQEGQRCVVILPDSVRNYMTKFLSDRWMLQKGFLEED
    
```

 Tel: 1-631-559-9269 1-516-512-3133

 Email: [info@creative-biomart.com](mailto:info@creative-biomart.com)  Fax: 1-631-938-8127

 45-1 Ramsey Road, Shirley, NY 11967, USA



LTEKKPWWWHLRVQELGLSAPLTVLPTITCGHTIEILREKGFQAPVVDEAGVILGM  
VTLGNMLSSLLAGKVQPSDQVGKVIYKQFKQIRLTDTLGRLSHILEMDHFALVVHEQI  
QYHSTGKSSQRQMVFVGVVTAIDLLNFVAAQERDQK

**Applications**  
Enzyme-linked Immunoabsorbent Assay  
Western Blot (Recombinant protein)  
Antibody Production  
Protein Array

**Storage** Store at -80 centigrade. Aliquot to avoid repeated freezing and thawing.

**Storage Buffer** 50 mM Tris-HCl, 10 mM reduced Glutathione, pH=8.0 in the elution buffer.

## GENE INFORMATION

**Gene Name** CBS cystathionine-beta-synthase [ Homo sapiens ]

**Official Symbol** CBS

**Synonyms** CBS; cystathionine-beta-synthase; cystathionine beta-synthase; HIP4; beta-thionase; serine sulfhydrase; methylocysteine synthase;

**Gene ID** 875

**mRNA Refseq** NM\_000071

**Protein Refseq** NP\_000062

**MIM** 613381

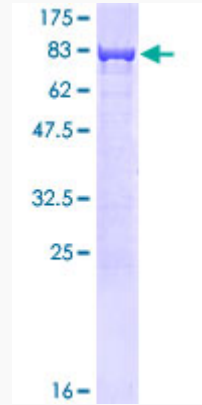
**UniProt ID** P35520

Tel: 1-631-559-9269 1-516-512-3133

Email: [info@creative-biomart.com](mailto:info@creative-biomart.com) Fax: 1-631-938-8127

45-1 Ramsey Road, Shirley, NY 11967, USA

**Quality Control  
Testing**



12.5% SDS-PAGE Stained with Coomassie Blue.

 Tel: 1-631-559-9269 1-516-512-3133

 Email: [info@creative-biomart.com](mailto:info@creative-biomart.com)  Fax: 1-631-938-8127

 45-1 Ramsey Road, Shirley, NY 11967, USA