

# Recombinant Full Length Human CBS Protein, C-Flag-tagged

Cat. No. CBS-1191HFL Lot. No. (See product label)

## SPECIFICATION

<b>Product Overview</b>	Recombinant Full Length Human CBS Protein, fused to Flag-tag at C-terminus, was expressed in Mammalian cells.
<b>Species</b>	Human
<b>Source</b>	Mammalian Cells
<b>Description</b>	The protein encoded by this gene acts as a homotetramer to catalyze the conversion of homocysteine to cystathionine, the first step in the transsulfuration pathway. The encoded protein is allosterically activated by adenosyl-methionine and uses pyridoxal phosphate as a cofactor. Defects in this gene can cause cystathionine beta-synthase deficiency (CBS), which can lead to homocystinuria. This gene is a major contributor to cellular hydrogen sulfide production. Multiple alternatively spliced transcript variants have been found for this gene.
<b>Form</b>	25 mM Tris HCl, pH 7.3, 100 mM glycine, 10% glycerol.
<b>Molecular Mass</b>	60.4 kDa
<b>AA Sequence</b>	MPSETPQAEVGP TGCPHRSGPHSAKGSLEKGSPEDEKEAKEPLWIRPDAPSRCTWQ LGRPASESPHHHTPP AKSPKILPDILKKGIDTPMVRINKIGKKFGLKCELLAKCEFFNA GGSVKDRISLRMIEDAERDGLKPGD TIIPTSGNTGIGLALAAAVRGYRCIIVMPEK MSSEKVDVLRALGAEIVRPTNARFDSPEHVGVAWRL KNEIPNSHILDQYRNASN PLAHYDTTAEILQQCDGKLDMLVASVGTGGTITGIARKLKEKCPGCRIGV DPEGSI LAEPEELNQTEQTTYEVEGIGYDFIPTVLDRTVVVDKWFKSNDEEAFTFARMLIAQEGL

 Tel: 1-631-559-9269 1-516-512-3133

 Email: [info@creative-biomart.com](mailto:info@creative-biomart.com)  Fax: 1-631-938-8127

 45-1 Ramsey Road, Shirley, NY 11967, USA

LCGGSA GSTVAVAVKAAQELQEGQRVILPDSVRNYMTKFLSDRWMLQKGFLKE  
 EDLTEKPPWWWHLRVQELGLS APLTVLPTITCGHTIEILREKGFQAPVVDEAGVIL  
 GMVTLGNMLSSLLAGKVQPSDQVGKVIYKQFKQI  
 RLTDTLGRLSHILEMDHFALVVHEQIQYHSTGKSSQRQMVFVGVVTAIDLLNFVAAQE  
 RDQKTRTRPLEQKLISEEDLAANDILDYKDDDDKV

**Purity** > 80% as determined by SDS-PAGE and Coomassie blue staining.

**Stability** Stable for 12 months from the date of receipt of the product under proper storage and handling conditions. Avoid repeated freeze-thaw cycles.

**Storage** Store at -80 centigrade.

**Concentration** >50 ug/mL as determined by microplate BCA method.

**Preparation** Recombinant protein was captured through anti-DDK affinity column followed by conventional chromatography steps.

**Protein Families** Druggable Genome

**Protein Pathways** Cysteine and methionine metabolism, Glycine, serine and threonine metabolism, Metabolic pathways, Selenoamino acid metabolism

**Full Length** Full L.

## GENE INFORMATION

**Gene Name** CBS cystathionine beta-synthase [ Homo sapiens (human) ]

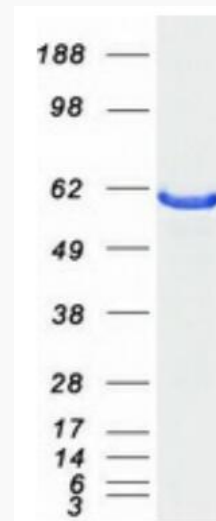
**Official Symbol** CBS

 Tel: 1-631-559-9269 1-516-512-3133

 Email: [info@creative-biomart.com](mailto:info@creative-biomart.com)  Fax: 1-631-938-8127

 45-1 Ramsey Road, Shirley, NY 11967, USA

<b>Synonyms</b>	CBSL; HIP4
<b>Gene ID</b>	875
<b>mRNA Refseq</b>	NM_000071.3
<b>Protein Refseq</b>	NP_000062.1
<b>MIM</b>	613381
<b>UniProt ID</b>	P35520



Coomassie blue staining of purified CBS protein.

 Tel: 1-631-559-9269 1-516-512-3133

 Email: [info@creative-biomart.com](mailto:info@creative-biomart.com)  Fax: 1-631-938-8127

 45-1 Ramsey Road, Shirley, NY 11967, USA