

Recombinant Human CBWD1 Protein, GST-Tagged

Cat. No. CBWD1-0475H **Lot. No.** (See product label)

SPECIFICATION

Product Overview	Human CBWD1 full-length ORF (AAH09573.1, 1 a.a. - 359 a.a.) recombinant protein with GST-tag at N-terminal.
Species	Human
Source	Wheat Germ
Description	CBWD1 (COBW Domain Containing 1) is a Protein Coding gene. An important paralog of this gene is CBWD2.
Molecular Mass	66.8 kDa
AA Sequence	<p>MYFKRAARAFPVLLTGAGKTTLLNYILTEQHSKRVAVILNEFGEGSALEKSLAVSQGG ELYEEWLELRNGCLCCSVKDSGLRAIENLMQKKGKFDYILLETTGLADPGAVASMF WVDAELGSDIYLDGIITIVDSKYGLKHLTEEKPDGLINEATRQVALADAILINKTDLVPE EDVKKLRTTIRSINGLGQILETQRSRVDLNSVLDLHAFDSLGSISLQKKLQHVPGTQP HLDQSIVTITFEVPGNAKEEHLNMFIQNLLWEKNVRNKDNHCMEVIRLKGLVSIKDKS QQVIVQGVHELYDLEETPVSWKDDTERTNRLVLLGRNLDKDILKQLFIATVTETEKQ WTTRFQEDQVCT</p>
Applications	<p>Enzyme-linked Immunoabsorbent Assay Western Blot (Recombinant protein) Antibody Production Protein Array</p>

 Tel: 1-631-559-9269 1-516-512-3133

 Email: info@creative-biomart.com  Fax: 1-631-938-8127

 45-1 Ramsey Road, Shirley, NY 11967, USA

Storage Store at -80 centigrade. Aliquot to avoid repeated freezing and thawing.

Storage Buffer 50 mM Tris-HCl, 10 mM reduced Glutathione, pH=8.0 in the elution buffer.

GENE INFORMATION

Gene Name CBWD1 COBW domain containing 1 [Homo sapiens]

Official Symbol CBWD1

Synonyms CBWD1; COBW domain containing 1; COBW domain-containing protein 1; COBW-like protein; NPC-A-6 COBW domain-containing protein 1; cobalamin synthase W domain-containing protein 1; cobalamin synthetase W domain-containing protein 1; COBP;

Gene ID 55871

mRNA Refseq NM_001145355

Protein Refseq NP_001138827

MIM 611078

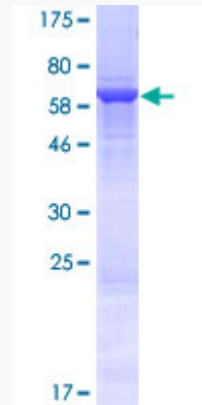
UniProt ID Q9BRT8

 Tel: 1-631-559-9269 1-516-512-3133

 Email: info@creative-biomart.com  Fax: 1-631-938-8127

 45-1 Ramsey Road, Shirley, NY 11967, USA

**Quality Control
Testing**



12.5% SDS-PAGE Stained with Coomassie Blue.

 Tel: 1-631-559-9269 1-516-512-3133

 Email: info@creative-biomart.com  Fax: 1-631-938-8127

 45-1 Ramsey Road, Shirley, NY 11967, USA