

## Recombinant Human CBX1 protein, His-tagged

Cat. No. CBX1-1159H Lot. No. (See product label)

### SPECIFICATION

<b>Product Overview</b>	Recombinant Human CBX1 protein(P83916)(200aa), fused with N-terminal His tag, was expressed in E. coli.
<b>Species</b>	Human
<b>Source</b>	E.coli
<b>Protein Length</b>	200aa(including fusion tag)
<b>Tag</b>	N-His
<b>Form</b>	20mM Tris.Cl, 50mM NaCl, 50% Glycerol, pH8.0.
<b>Molecular Mass</b>	23.3kDa(including fusion tag)
<b>Storage</b>	Store at -80°C and avoid repeated freeze-thaw cycles.
<b>Reconstitution</b>	It is recommended that sterile water be added to the vial to prepare a stock solution of 0.2 ug/ul. Centrifuge the vial at 4°C before opening to recover the entire contents.

### GENE INFORMATION

<b>Gene Name</b>	CBX1 chromobox homolog 1 [ Homo sapiens ]
<b>Official Symbol</b>	CBX1

 Tel: 1-631-559-9269 1-516-512-3133

 Email: [info@creative-biomart.com](mailto:info@creative-biomart.com)  Fax: 1-631-938-8127

 45-1 Ramsey Road, Shirley, NY 11967, USA

**Synonyms**

CBX1; chromobox homolog 1; chromobox homolog 1 (Drosophila HP1 beta); chromobox protein homolog 1; CBX; HP1 beta homolog (Drosophila ); HP1 BETA; HP1Hs beta; M31; MOD1; HP1 beta homolog; modifier 1 protein; heterochromatin protein 1-beta; heterochromatin protein p25 beta; heterochromatin protein 1 homolog beta; chromobox homolog 1 (HP1 beta homolog Drosophila ); p25beta; HP1-BETA; HP1Hsbeta; HP1Hs-beta;

**Gene ID**

10951

**mRNA Refseq**

NM\_001127228

**Protein Refseq**

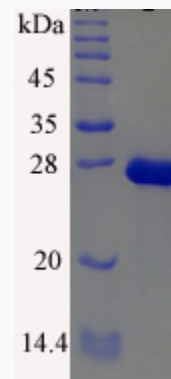
NP\_001120700

**MIM**

604511

**UniProt ID**

P83916

**SDS-PAGE**


 Tel: 1-631-559-9269 1-516-512-3133

 Email: [info@creative-biomart.com](mailto:info@creative-biomart.com)  Fax: 1-631-938-8127

 45-1 Ramsey Road, Shirley, NY 11967, USA